



Enight™ 2.2

DICOM Conformance Statement

Document ID: PROD-0515

Revision number: v01

Revision date: February 04, 2026

Table of Contents

1.0 Introduction	7
1.1 Revision History	7
1.2 Terms and Definition	7
1.3 Warning Notices	12
2.0 Networking	13
2.1 Implementation Model	13
2.1.1 Application Data Flow	13
2.1.2 Functional Definition of Application Entities	17
2.1.2.1 Ensign Storage Application Entity	17
2.1.2.1.1 Store Instances	18
2.1.2.1.2 Standardize Instances	18
2.1.2.1.3 De-Identify Instances	18
2.1.2.1.4 Storage Commitment	18

2.1.2.2 Ensign Query/Retrieve Application Entity	18
2.1.2.2.1 Find Instances	18
2.1.2.2.2 Move Instances	19
2.2 AE Specification	19
2.2.1 Storage Application Entity Specification	19
2.2.1.1 SOP Classes	19
2.2.1.2 Association Policies	47
2.2.1.2.1 General	47
2.2.1.2.2 Number of Association	47
2.2.1.2.3 Asynchronous Nature	48
2.2.1.2.4 Implementation Identifying Information	48
2.2.1.3 Association Initiation Policies	48
2.2.1.4 Association Acceptance Policy	49
2.2.1.4.1 Real-World Activity - Receive Images for Standardization and Commitment Requests	49
2.2.1.4.1.1 Accepted Presentation Contexts	49
2.2.2 Query/Retrieve Application Entity Specification	53

2.2.2.1 SOP Classes	53
2.2.2.2 Association Policies	80
2.2.2.2.1 General	80
2.2.2.2.2 Number of Association	81
2.2.2.2.3 Asynchronous Nature	81
2.2.2.2.4 Implementation Identifying Information	81
2.2.2.3 Association Initiation Policy	82
2.2.2.3.1 Proposed Presentation Contexts	82
2.2.2.4 Association Acceptance Policy	91
2.2.2.4.1 Proposed Presentation Contexts	91
2.3 Network Interfaces	100
2.3.1 Physical Network Interface	100
2.4 Configuration	101
2.4.1 AE Title/Presentation Address Mapping	101
2.4.1.1 Local AE Titles	101
3.0 Media Interchange	102

6.2.1.5 Summary of Standardized Series (TID ENDEXSERIESRES)	137
---	-----

1.0 Introduction

1.1 Revision History

Date	Revision	Description
January 13, 2026	01	Initial release of statement for Ensignt v2.2.

1.2 Terms and Definition

Informal definitions are provided for the following terms used in this Conformance Statement. The DICOM Standard is the authoritative source for formal definitions of these terms.

Abstract Syntax:The information agreed to be exchanged between applications, generally equivalent to a Service/Object Pair (SOP) Class.

- **Examples:** Verification SOP Class, Modality Worklist Information Model Find SOP Class, Computed Radiography Image Storage SOP Class.

Application Entity (AE): An end point of a DICOM information exchange, including the DICOM network or media interface software, i.e., the software that sends or receives DICOM information objects or messages. A single device may have multiple Application Entities.

Application Entity Title: The externally known name of an Application Entity, used to identify a DICOM application to other DICOM applications on the network.

Application Context: The specification of the type of communication used between Application Entities. Example: DICOM network protocol.

Association: A network communication channel set up between Application Entities.

Attribute: A unit of information in an object definition; a data element identified by a tag. The information may be a complex data structure (Sequence), itself composed of lower-level data elements.

- **Examples:** Patient ID (0010,0020), Accession Number (0008,0050), Photometric Interpretation (0028,0004), Procedure Code Sequence (0008,1032).

De-Identify/De-Identification (DEID): Ensignt™ term for redaction of header and image pixel data containing Protected Health Information.

Information Object Definition (IOD): The specified set of Attributes that comprise a type of data object; does not represent a specific instance of the data object, but rather a class of similar data objects that have the same properties. The Attributes may be specified as Mandatory (Type 1), Required but possibly unknown (Type 2), or Optional (Type 3), and there may be conditions associated with the use of an Attribute (Types 1C and 2C).

- **Examples:** MR Image IOD, CT Image IOD, Print Job IOD.

Joint Photographic Experts Group (JPEG): A set of standardized image compression techniques, available for use by DICOM applications.

Media Application Profile: The specification of DICOM information objects and encoding exchanged on removable media (e.g., CDs)

Module: A set of Attributes within an Information Object Definition that are logically related to each other.

- **Example:** Patient Module includes Patient Name, Patient ID, Patient Birth Date, and Patient Sex.

Negotiation: First phase of Association establishment that allows Application Entities to agree on the types of data to be exchanged and how that data will be encoded.

Presentation Context: The set of DICOM network services used over an Association, as negotiated between Application Entities; includes Abstract Syntaxes and Transfer Syntaxes.

Protocol Data Unit (PDU): A packet (piece) of a DICOM message sent across the network. Devices must specify the maximum size packet they can receive for DICOM messages.

Security Profile: A set of mechanisms, such as encryption, user authentication, or digital signatures, used by an Application Entity to ensure confidentiality, integrity, and/or availability of exchanged DICOM data.

Service Class Provider (SCP): Role of an Application Entity that provides a DICOM network service; typically, a server that performs operations requested by another Application Entity (Service Class Use.)

- **Examples:** Picture Archiving and Communication System (image storage SCP, and image query/retrieve SCP), Radiology Information System (modality worklist SCP).

Service Class User (SCU): Role of an Application Entity that uses a DICOM network service; typically, a client.

- **Examples:** Imaging modality (image storage SCU, and modality worklist SCU), imaging workstation (image query/retrieve SCU)

Service/Object Pair (SOP) Class: The specification of the network or media transfer (service) of a particular type of data (object); the fundamental unit of DICOM interoperability specification.

- **Examples:** Ultrasound Image Storage Service, Basic Grayscale Print Management.

Service/Object Pair (SOP) Instance: An information object; a specific occurrence of information exchanged in a SOP Class.

- **Examples:** a specific x-ray image.

Standardize/Standardization (STD): Enlight™ term for normalizing certain tags.

Tag: A 32-bit identifier for a data element, represented as a pair of four digit hexadecimal numbers, the "group" and the "element". If the "group" number is odd, the tag is for a private (manufacturer-specific) data element.

- **Examples:** (0010,0020) [Patient ID], (07FE,0010) [Pixel Data], (0019,0210) [private data element]

Transfer Syntax: The encoding used for exchange of DICOM information objects and messages.

- **Examples:** JPEG compressed (images), little endian explicit value representation.

Unique Identifier (UID): A globally unique "dotted decimal" string that identifies a specific object or a class of objects; an ISO-8824 Object Identifier.

- **Examples:** Study Instance UID, SOP Class UID, SOP Instance UID.

Value Representation (VR): The format type of an individual DICOM data element, such as text, an integer, a person's name, or a code. DICOM information objects can be transmitted with either explicit identification of the type of each data element (Explicit VR), or without explicit identification (Implicit VR); with Implicit VR, the receiving application must use a DICOM data dictionary to look up the format of each data element.

1.3 Warning Notices

Types of warning notices used in this document include – Caution and Warning.

- **Caution** statements warn about the risks of material damage.
- **Warning** statements warn about the risks of physical injury

2.0 Networking

2.1 Implementation Model

2.1.1 Application Data Flow

The Application Data flow diagrams depict real-world activities performed by Ensign™.

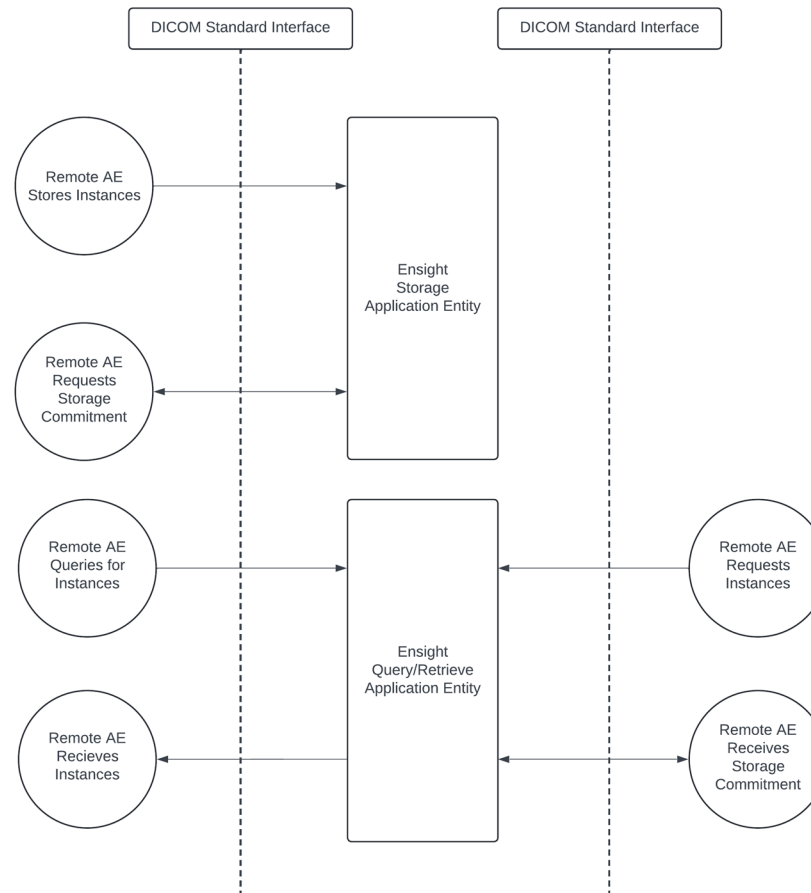


Figure 1: DICOM Data Flow

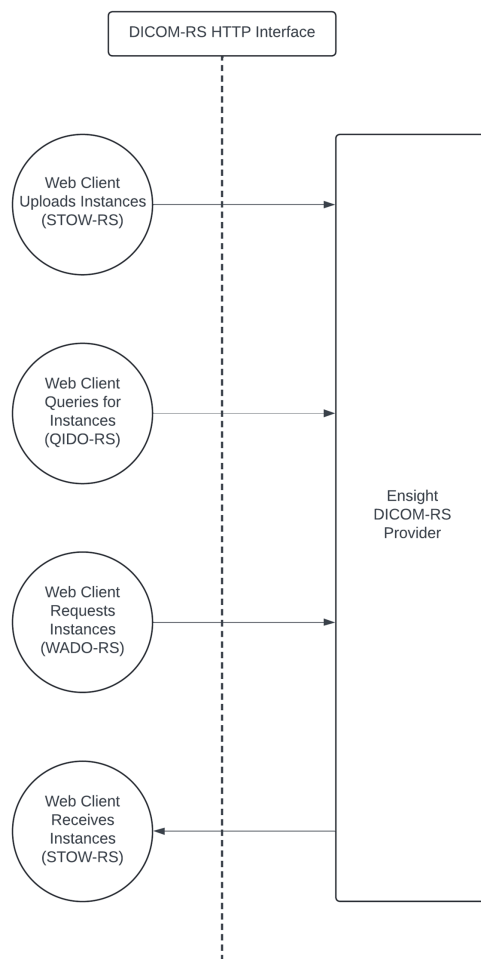


Figure 2: DICOM-RS Data Flow

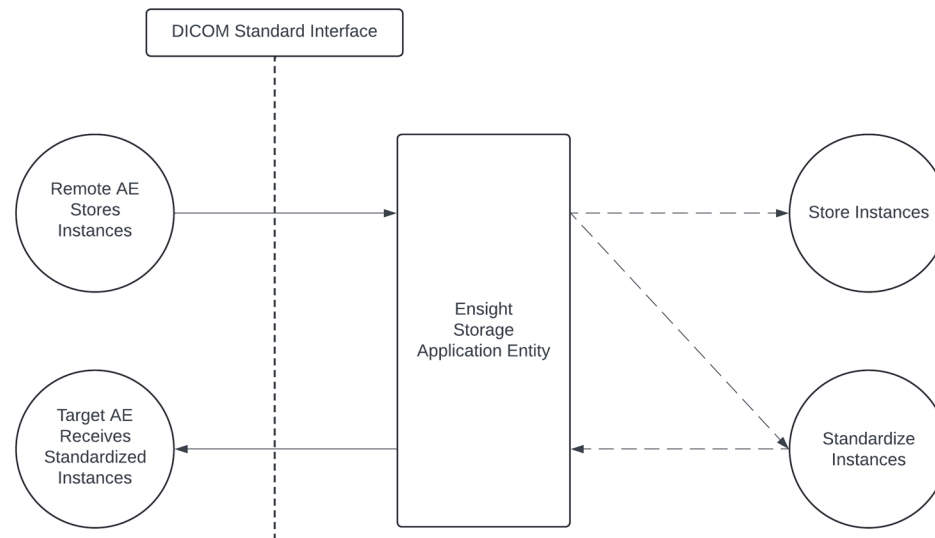


Figure 3: DICOM Study Standardization Data Flow

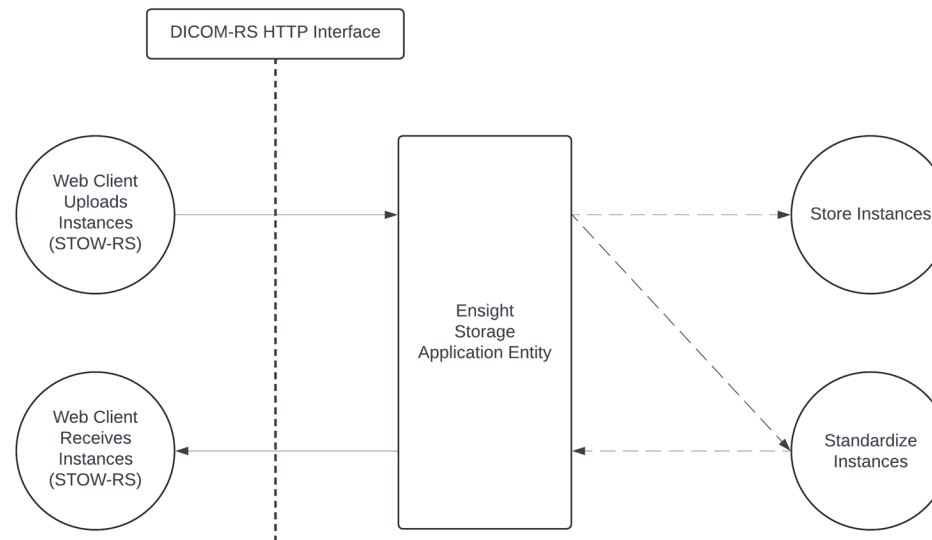


Figure 4: DICOM-RS Study Standardization Data Flow

2.1.2 Functional Definition of Application Entities

The section provides functional details for EnsigntApplication Entity.

2.1.2.1 Ensignt Storage Application Entity

The EnsigntStorage AE receives images and instances from remote AEs.

2.1.2.1.1 Store Instances

Enlight will accept remote C-STORE requests to store DICOM instances. Received instances will be indexed in the Database and stored on a filesystem.

2.1.2.1.2 Standardize Instances

Enlight can take ingested instances and perform inference against them to update Study and Series Description with normalized (“standardized”) values.

2.1.2.1.3 De-Identify Instances

Enlight can take ingested instances and perform redaction of Protected Health Information (PHI.)

2.1.2.1.4 Storage Commitment

Enlight will accept remote Storage Commitment requests and send back a Commitment Confirmation.

2.1.2.2 Enight Query/Retrieve Application Entity

Enlight Q/R AE processes queries for Patient, Study, Series, and Instances located in its cache.

2.1.2.2.1 Find Instances

Enlight will accept C-FIND requests initiated by remote AEs and respond. C-FIND requests are satisfied with data held in the Enight database.

2.1.2.2.2 Move Instances

Enlight will accept C-MOVE requests initiated by remote AEs and, if applicable, initiate C-STORE requests to push instances in its cache to the specified remote AE.

2.2 AE Specification

2.2.1 Storage Application Entity Specification

2.2.1.1 SOP Classes

Enlight Storage AE provides Standard Conformance to the following SOP Classes:

SOP Class	SOP Class UID	SCU	SCP	STD
Verification				
Verification SOP Class	1.2.840.10008.1.1	Yes	Yes	No
Storage Commitment Push Model SOP Class	1.2.840.10008.1.20.1	No	Yes	No

Image Storage SOP Classes

SOP Class	SOP Class UID	SCU	SCP	STD
Computed Radiography Image Storage	1.2.840.10008.5.1.4.1.1.1	No	Yes	Yes
Digital X-Ray Image Storage – For Presentation	1.2.840.10008.5.1.4.1.1.1.1	No	Yes	Yes
Digital X-Ray Image Storage – For Processing	1.2.840.10008.5.1.4.1.1.1.1.1	No	Yes	No
Digital Mammography X-Ray Image Storage – For Presentation	1.2.840.10008.5.1.4.1.1.1.2	No	Yes	No
Digital Mammography X-Ray Image Storage – For Processing	1.2.840.10008.5.1.4.1.1.1.2.1	No	Yes	No
Digital Intra-Oral X-Ray Image Storage – For Presentation	1.2.840.10008.5.1.4.1.1.1.3	No	Yes	No
Digital Intra-Oral X-Ray Image Storage – For Processing	1.2.840.10008.5.1.4.1.1.1.3.1	No	Yes	No

SOP Class	SOP Class UID	SCU	SCP	STD
CT Image Storage	1.2.840.10008.5.1.4.1.1.2	No	Yes	Yes
Enhanced CT Image Storage	1.2.840.10008.5.1.4.1.1.2.1	No	Yes	No
Legacy Converted Enhanced CT Image Storage	1.2.840.10008.5.1.4.1.1.2.2	No	Yes	No
Ultrasound Multi-frame Image Storage (Retired)	1.2.840.10008.5.1.4.1.1.3	No	Yes	No
Ultrasound Multi-frame Image Storage	1.2.840.10008.5.1.4.1.1.3.1	No	Yes	No
MR Image Storage	1.2.840.10008.5.1.4.1.1.4	No	Yes	Yes
Enhanced MR Image Storage	1.2.840.10008.5.1.4.1.1.4.1	No	Yes	No
Enhanced MR Color Image Storage	1.2.840.10008.5.1.4.1.1.4.3	No	Yes	No
Legacy Converted Enhanced MR Image Storage	1.2.840.10008.5.1.4.1.1.4.4	No	Yes	No

SOP Class	SOP Class UID	SCU	SCP	STD
Nuclear Medicine Image Storage (Retired)	1.2.840.10008.5.1.4.1.1.5	No	Yes	No
Ultrasound Image Storage (Retired)	1.2.840.10008.5.1.4.1.1.6	No	Yes	No
Ultrasound Image Storage	1.2.840.10008.5.1.4.1.1.6.1	No	Yes	No
Enhanced US Volume Storage	1.2.840.10008.5.1.4.1.1.6.2	No	Yes	No
Secondary Capture Image Storage	1.2.840.10008.5.1.4.1.1.7	No	Yes	No
Multi-frame Grayscale Byte Secondary Capture Image Storage	1.2.840.10008.5.1.4.1.1.7.2	No	Yes	No
Multi-frame Grayscale Word Secondary Capture Image Storage	1.2.840.10008.5.1.4.1.1.7.3	No	Yes	No
Multi-frame True Color Secondary Capture Image Storage	1.2.840.10008.5.1.4.1.1.7.4	No	Yes	No

SOP Class	SOP Class UID	SCU	SCP	STD
X-Ray Angiographic Image Storage	1.2.840.10008.5.1.4.1.1.12.1	No	Yes	No
Enhanced XA Image Storage	1.2.840.10008.5.1.4.1.1.12.1.1	No	Yes	No
X-Ray Radiofluoroscopic Image Storage	1.2.840.10008.5.1.4.1.1.12.2	No	Yes	No
Enhanced XRF Image Storage	1.2.840.10008.5.1.4.1.1.12.2.1	No	Yes	No
X-Ray Angiographic Bi-Plane Image Storage (Retired)	1.2.840.10008.5.1.4.1.1.12.3	No	Yes	No
X-Ray 3D Angiographic Image Storage	1.2.840.10008.5.1.4.1.1.13.1.1	No	Yes	No
X-Ray 3D Craniofacial Image Storage	1.2.840.10008.5.1.4.1.1.13.1.2	No	Yes	No
Breast Tomosynthesis Image Storage	1.2.840.10008.5.1.4.1.1.13.1.3	No	Yes	No
Breast Projection X-Ray Image Storage – For Presentation	1.2.840.10008.5.1.4.1.1.13.1.4	No	Yes	No

SOP Class	SOP Class UID	SCU	SCP	STD
Breast Projection X-Ray Image Storage – For Processing	1.2.840.10008.5.1.4.1.1.13.1.5	No	Yes	No
Intravascular Optical Coherence Tomography Image Storage – For Presentation	1.2.840.10008.5.1.4.1.1.14.1	No	Yes	No
Intravascular Optical Coherence Tomography Image Storage – For Processing	1.2.840.10008.5.1.4.1.1.14.2	No	Yes	No
Nuclear Medicine Image Storage	1.2.840.10008.5.1.4.1.1.20	No	Yes	No
VL Image Storage – Trial (Retired)	1.2.840.10008.5.1.4.1.1.77.1	No	Yes	No
VL Multi-frame Image Storage – Trial (Retired)	1.2.840.10008.5.1.4.1.1.77.2	No	Yes	No
VL Endoscopic Image Storage	1.2.840.10008.5.1.4.1.1.77.1.1	No	Yes	No
VL Microscopic Image Storage	1.2.840.10008.5.1.4.1.1.77.1.2	No	Yes	No

SOP Class	SOP Class UID	SCU	SCP	STD
VL Slide-Coordinates Microscopic Image Storage	1.2.840.10008.5.1.4.1.1.77.1.3	No	Yes	No
VL Photographic Image Storage	1.2.840.10008.5.1.4.1.1.77.1.4	No	Yes	No
Ophthalmic Photography 8 Bit Image Storage	1.2.840.10008.5.1.4.1.1.77.1.5.1	No	Yes	No
Ophthalmic Photography 16 Bit Image Storage	1.2.840.10008.5.1.4.1.1.77.1.5.2	No	Yes	No
Ophthalmic Tomography Image Storage	1.2.840.10008.5.1.4.1.1.77.1.5.4	No	Yes	No
Wide Field Ophthalmic Photography Stereographic Projection Image Storage	1.2.840.10008.5.1.4.1.1.77.1.5.5	No	Yes	No
Wide Field Ophthalmic Photography 3D Coordinates Image Storage	1.2.840.10008.5.1.4.1.1.77.1.5.6	No	Yes	No
Ophthalmic Optical Coherence Tomography EnFace Image Storage	1.2.840.10008.5.1.4.1.1.77.1.5.7	No	Yes	No

SOP Class	SOP Class UID	SCU	SCP	STD
Ophthalmic Optical Coherence Tomography Bscan Volume Analysis Storage	1.2.840.10008.5.1.4.1.1.77.1.5.8	No	Yes	No
VL Whole Slide Microscopy Image Storage	1.2.840.10008.5.1.4.1.1.77.1.6	No	Yes	No
Dermoscopic Photography Image Storage	1.2.840.10008.5.1.4.1.1.77.1.7	No	Yes	No
Ophthalmic Thickness Map Storage	1.2.840.10008.5.1.4.1.1.81.1	No	Yes	No
Corneal Topography Map Storage	1.2.840.10008.5.1.4.1.1.82.1	No	Yes	No
Positron Emission Tomography Image Storage	1.2.840.10008.5.1.4.1.1.128	No	Yes	No
Legacy Converted Enhanced PET Image Storage	1.2.840.10008.5.1.4.1.1.128.1	No	Yes	No
Enhanced PET Image Storage	1.2.840.10008.5.1.4.1.1.130	No	Yes	No
RT Image Storage	1.2.840.10008.5.1.4.1.1.481.1	No	Yes	No

SOP Class	SOP Class UID	SCU	SCP	STD
Private Fuji CR Image Storage	1.2.392.200036.9125.1.1.2	No	Yes	No
Private GE Dicom CT Image Info Object	1.2.840.113619.4.3	No	Yes	No
Private GE Dicom Display Image Info Object	1.2.840.113619.4.4	No	Yes	No
Private GE Dicom MR Image Info Object	1.2.840.113619.4.2	No	Yes	No
Private Philips CT Synthetic Image Storage	1.3.46.670589.5.0.9	No	Yes	No
Private Philips CX Image Storage	1.3.46.670589.2.4.1.1	No	Yes	No
Private Philips CX Synthetic Image Storage	1.3.46.670589.5.0.12	No	Yes	No
Private Philips MR Color Image Storage	1.3.46.670589.11.0.0.12.3	No	Yes	No
Private Philips MR Synthetic Image Storage	1.3.46.670589.5.0.10	No	Yes	No

SOP Class	SOP Class UID	SCU	SCP	STD
Private Philips Perfusion Image Storage	1.3.46.670589.5.0.14	No	Yes	No
Private PixelMed Floating Point Image Storage	1.3.6.1.4.1.5962.301.9	No	Yes	No
Private PixelMed Legacy Converted Enhanced CT Image Storage	1.3.6.1.4.1.5962.301.1	No	Yes	No
Private PixelMed Legacy Converted Enhanced MR Image Storage	1.3.6.1.4.1.5962.301.2	No	Yes	No
Private PixelMed Legacy Converted Enhanced PET Image Storage	1.3.6.1.4.1.5962.301.3	No	Yes	No
Private PMOD Multi-frame Image Storage	2.16.840.1.114033.5.1.4.1.1.130	No	Yes	No
Private Toshiba US Image Storage	1.2.392.200036.9116.7.8.1.1.1	No	Yes	No
Video Storage SOP Classes				

SOP Class	SOP Class UID	SCU	SCP	STD
Video Endoscopic Image Storage	1.2.840.10008.5.1.4.1.1.77.1.1.1	No	Yes	No
Video Microscopic Image Storage	1.2.840.10008.5.1.4.1.1.77.1.2.1	No	Yes	No
Video Photographic Image Storage	1.2.840.10008.5.1.4.1.1.77.1.4.1	No	Yes	No
Structured Report Storage SOP Classes				
Spectacle Prescription Report Storage	1.2.840.10008.5.1.4.1.1.78.6	No	Yes	No
Macular Grid Thickness and Volume Report Storage	1.2.840.10008.5.1.4.1.1.79.1	No	Yes	No
Basic Text SR Storage	1.2.840.10008.5.1.4.1.1.88.11	No	Yes	No
Enhanced SR Storage	1.2.840.10008.5.1.4.1.1.88.22	No	Yes	No
Comprehensive SR Storage	1.2.840.10008.5.1.4.1.1.88.33	No	Yes	No

SOP Class	SOP Class UID	SCU	SCP	STD
Comprehensive 3D SR Storage	1.2.840.10008.5.1.4.1.1.88.34	No	Yes	No
Extensible SR Storage	1.2.840.10008.5.1.4.1.1.88.35	No	Yes	No
Procedure Log Storage	1.2.840.10008.5.1.4.1.1.88.40	No	Yes	No
Mammography CAD SR Storage	1.2.840.10008.5.1.4.1.1.88.50	No	Yes	No
Key Object Selection Document Storage	1.2.840.10008.5.1.4.1.1.88.59	No	Yes	No
Chest CAD SR Storage	1.2.840.10008.5.1.4.1.1.88.65	No	Yes	No
X-Ray Radiation Dose SR Storage	1.2.840.10008.5.1.4.1.1.88.67	No	Yes	No
Radiopharmaceutical Radiation Dose SR Storage	1.2.840.10008.5.1.4.1.1.88.68	No	Yes	No
Colon CAD SR Storage	1.2.840.10008.5.1.4.1.1.88.69	No	Yes	No

SOP Class	SOP Class UID	SCU	SCP	STD
Implantation Plan SR Storage	1.2.840.10008.5.1.4.1.1.88.70	No	Yes	No
Acquisition Context SR Storage	1.2.840.10008.5.1.4.1.1.88.71	No	Yes	No
Simplified Adult Echo SR Storage	1.2.840.10008.5.1.4.1.1.88.72	No	Yes	No
Patient Radiation Dose SR Storage	1.2.840.10008.5.1.4.1.1.88.73	No	Yes	No
Planned Imaging Agent Administration SR Storage	1.2.840.10008.5.1.4.1.1.88.74	No	Yes	No
Performed Imaging Agent Administration SR Storage	1.2.840.10008.5.1.4.1.1.88.75	No	Yes	No
Other SOP Classes				
Stored Print Storage SOP Class (Retired)	1.2.840.10008.5.1.1.27	No	Yes	No
Hardcopy Grayscale Image Storage SOP Class (Retired)	1.2.840.10008.5.1.1.29	No	Yes	No

SOP Class	SOP Class UID	SCU	SCP	STD
Hardcopy Color Image Storage SOP Class (Retired)	1.2.840.10008.5.1.1.30	No	Yes	No
MR Spectroscopy Storage	1.2.840.10008.5.1.4.1.1.4.2	No	Yes	No
Multi-frame Single Bit Secondary Capture Image Storage	1.2.840.10008.5.1.4.1.1.7.1	No	Yes	No
Standalone Overlay Storage Retired	1.2.840.10008.5.1.4.1.1.8	No	Yes	No
Standalone Curve Storage Retired	1.2.840.10008.5.1.4.1.1.9	No	Yes	No
12-lead ECG Waveform Storage	1.2.840.10008.5.1.4.1.1.9.1.1	No	Yes	No
General ECG Waveform Storage	1.2.840.10008.5.1.4.1.1.9.1.2	No	Yes	No
Ambulatory ECG Waveform Storage	1.2.840.10008.5.1.4.1.1.9.1.3	No	Yes	No

SOP Class	SOP Class UID	SCU	SCP	STD
Hemodynamic Waveform Storage	1.2.840.10008.5.1.4.1.1.9.2.1	No	Yes	No
Cardiac Electrophysiology Waveform Storage	1.2.840.10008.5.1.4.1.1.9.3.1	No	Yes	No
Basic Voice Audio Waveform Storage	1.2.840.10008.5.1.4.1.1.9.4.1	No	Yes	No
General Audio Waveform Storage	1.2.840.10008.5.1.4.1.1.9.4.2	No	Yes	No
Arterial Pulse Waveform Storage	1.2.840.10008.5.1.4.1.1.9.5.1	No	Yes	No
Respiratory Waveform Storage	1.2.840.10008.5.1.4.1.1.9.6.1	No	Yes	No
Multi-channel Respiratory Waveform Storage	1.2.840.10008.5.1.4.1.1.9.6.2	No	Yes	No
Routine Scalp Electroencephalogram Waveform Storage	1.2.840.10008.5.1.4.1.1.9.7.1	No	Yes	No
Electromyogram Waveform Storage	1.2.840.10008.5.1.4.1.1.9.7.2	No	Yes	No

SOP Class	SOP Class UID	SCU	SCP	STD
Electrooculogram Waveform Storage	1.2.840.10008.5.1.4.11.9.7.3	No	Yes	No
Sleep Electroencephalogram Waveform Storage	1.2.840.10008.5.1.4.11.9.7.4	No	Yes	No
Body Position Waveform Storage	1.2.840.10008.5.1.4.11.9.8.1	No	Yes	No
Standalone Modality LUT Storage Retired	1.2.840.10008.5.1.4.11.10	No	Yes	No
Standalone VOI LUT Storage Retired	1.2.840.10008.5.1.4.11.11	No	Yes	No
Grayscale Softcopy Presentation State Storage SOP Class	1.2.840.10008.5.1.4.11.11.1	No	Yes	No
Color Softcopy Presentation State Storage SOP Class	1.2.840.10008.5.1.4.11.11.2	No	Yes	No
Pseudo-Color Softcopy Presentation State Storage SOP Class	1.2.840.10008.5.1.4.11.11.3	No	Yes	No

SOP Class	SOP Class UID	SCU	SCP	STD
Blending Softcopy Presentation State Storage SOP Class	1.2.840.10008.5.1.4.1.1.11.4	No	Yes	No
XA/XRF Grayscale Softcopy Presentation State Storage	1.2.840.10008.5.1.4.1.1.11.5	No	Yes	No
Grayscale Planar MPR Volumetric Presentation State Storage	1.2.840.10008.5.1.4.1.1.11.6	No	Yes	No
Compositing Planar MPR Volumetric Presentation State Storage	1.2.840.10008.5.1.4.1.1.11.7	No	Yes	No
Advanced Blending Presentation State Storage	1.2.840.10008.5.1.4.1.1.11.8	No	Yes	No
Volume Rendering Volumetric Presentation State Storage	1.2.840.10008.5.1.4.1.1.11.9	No	Yes	No
Segmented Volume Rendering Volumetric Presentation State Storage	1.2.840.10008.5.1.4.1.1.11.10	No	Yes	No

SOP Class	SOP Class UID	SCU	SCP	STD
Multiple Volume Rendering Volumetric Presentation State Storage	1.2.840.10008.5.1.4.1.1.11.11	No	Yes	No
Parametric Map Storage	1.2.840.10008.5.1.4.1.1.30	No	Yes	No
Raw Data Storage	1.2.840.10008.5.1.4.1.1.66	No	Yes	No
Spatial Registration Storage	1.2.840.10008.5.1.4.1.1.66.1	No	Yes	No
Spatial Fiducials Storage	1.2.840.10008.5.1.4.1.1.66.2	No	Yes	No
Deformable Spatial Registration Storage	1.2.840.10008.5.1.4.1.1.66.3	No	Yes	No
Segmentation Storage	1.2.840.10008.5.1.4.1.1.66.4	No	Yes	No
Surface Segmentation Storage	1.2.840.10008.5.1.4.1.1.66.5	No	Yes	No
Tractography Results Storage	1.2.840.10008.5.1.4.1.1.66.6	No	Yes	No

SOP Class	SOP Class UID	SCU	SCP	STD
Real World Value Mapping Storage	1.2.840.10008.5.1.4.11.67	No	Yes	No
Surface Scan Mesh Storage	1.2.840.10008.5.1.4.11.68.1	No	Yes	No
Surface Scan Point Cloud Storage	1.2.840.10008.5.1.4.11.68.2	No	Yes	No
Stereometric Relationship Storage	1.2.840.10008.5.1.4.11.77.1.5.3	No	Yes	No
Lensometry Measurements Storage	1.2.840.10008.5.1.4.11.78.1	No	Yes	No
Autorefracton Measurements Storage	1.2.840.10008.5.1.4.11.78.2	No	Yes	No
Keratometry Measurements Storage	1.2.840.10008.5.1.4.11.78.3	No	Yes	No
Subjective Refraction Measurements Storage	1.2.840.10008.5.1.4.11.78.4	No	Yes	No
Visual Acuity Measurements Storage	1.2.840.10008.5.1.4.11.78.5	No	Yes	No

SOP Class	SOP Class UID	SCU	SCP	STD
Ophthalmic Axial Measurements Storage	1.2.840.10008.5.1.4.1.1.78.7	No	Yes	No
Intraocular Lens Calculations Storage	1.2.840.10008.5.1.4.1.1.78.8	No	Yes	No
Ophthalmic Visual Field Static Perimetry Measurements Storage	1.2.840.10008.5.1.4.1.1.80.1	No	Yes	No
BasicStructuredDisplayStorage	1.2.840.10008.5.1.4.1.1.131	No	Yes	No
Encapsulated PDF Storage	1.2.840.10008.5.1.4.1.1.104.1	No	Yes	No
Encapsulated CDA Storage	1.2.840.10008.5.1.4.1.1.104.2	No	Yes	No
Encapsulated STL Storage	1.2.840.10008.5.1.4.1.1.104.3	No	Yes	No
Encapsulated OBJ Storage	1.2.840.10008.5.1.4.1.1.104.4	No	Yes	No
Encapsulated MTL Storage	1.2.840.10008.5.1.4.1.1.104.5	No	Yes	No

SOP Class	SOP Class UID	SCU	SCP	STD
Standalone PET Curve Storage (Retired)	1.2.840.10008.5.1.4.1.1.129	No	Yes	No
Text SR Storage Trial (Retired)	1.2.840.10008.5.1.4.1.1.88.1	No	Yes	No
Audio SR Storage Trial (Retired)	1.2.840.10008.5.1.4.1.1.88.2	No	Yes	No
Detail SR Storage Trial (Retired)	1.2.840.10008.5.1.4.1.1.88.3	No	Yes	No
Comprehensive SR Storage Trial (Retired)	1.2.840.10008.5.1.4.1.1.88.4	No	Yes	No
Content Assessment Results Storage	1.2.840.10008.5.1.4.1.1.90.1	No	Yes	No
CT Performed Procedure Protocol Storage	1.2.840.10008.5.1.4.1.1.200.2	No	Yes	No
XA Performed Procedure Protocol Storage	1.2.840.10008.5.1.4.1.1.200.8	No	Yes	No
RT Dose Storage	1.2.840.10008.5.1.4.1.1.481.2	No	Yes	No

SOP Class	SOP Class UID	SCU	SCP	STD
RT Structure Set Storage	1.2.840.10008.5.1.4.11.481.3	No	Yes	No
RT Beams Treatment Record Storage	1.2.840.10008.5.1.4.11.481.4	No	Yes	No
RT Plan Storage	1.2.840.10008.5.1.4.11.481.5	No	Yes	No
RT Brachy Treatment Record Storage	1.2.840.10008.5.1.4.11.481.6	No	Yes	No
RT Treatment Summary Record Storage	1.2.840.10008.5.1.4.11.481.7	No	Yes	No
RT Ion Plan Storage	1.2.840.10008.5.1.4.11.481.8	No	Yes	No
RT Ion Beams Treatment Record Storage	1.2.840.10008.5.1.4.11.481.9	No	Yes	No
RT Physician Intent Storage	1.2.840.10008.5.1.4.11.481.10	No	Yes	No
RT Segment Annotation Storage	1.2.840.10008.5.1.4.11.481.11	No	Yes	No

SOP Class	SOP Class UID	SCU	SCP	STD
RT Radiation Set Storage	1.2.840.10008.5.1.4.11.481.12	No	Yes	No
C-Arm Photon-Electron Radiation Storage	1.2.840.10008.5.1.4.11.481.13	No	Yes	No
Tomotherapeutic Radiation Storage	1.2.840.10008.5.1.4.11.481.14	No	Yes	No
Robotic-Arm Radiation Storage	1.2.840.10008.5.1.4.11.481.15	No	Yes	No
RT Radiation Record Set Storage	1.2.840.10008.5.1.4.11.481.16	No	Yes	No
RT Radiation Salvage Record Storage	1.2.840.10008.5.1.4.11.481.17	No	Yes	No
Tomotherapeutic Radiation Record Storage	1.2.840.10008.5.1.4.11.481.18	No	Yes	No
C-Arm Photon-Electron Radiation Record Storage	1.2.840.10008.5.1.4.11.481.19	No	Yes	No
Robotic Radiation Record Storage	1.2.840.10008.5.1.4.11.481.20	No	Yes	No

SOP Class	SOP Class UID	SCU	SCP	STD
RT Beams Delivery Instruction Storage	1.2.840.10008.5.1.4.34.7	No	Yes	No
RT Brachy Application Setup Delivery Instruction Storage	1.2.840.10008.5.1.4.34.10	No	Yes	No
Private Agfa Arrival Transaction	1.2.124.113532.3500.8.1	No	Yes	No
Private Agfa Basic Attribute Presentation State	1.2.124.113532.3500.7	No	Yes	No
Private Agfa Dictation Transaction	1.2.124.113532.3500.8.2	No	Yes	No
Private Agfa Report Approval Transaction	1.2.124.113532.3500.8.4	No	Yes	No
Private Agfa Report Transcription Transaction	1.2.124.113532.3500.8.3	No	Yes	No
Private ERAD Practice Builder Report Dictation Storage	1.2.826.0.1.3680043.293.1.0.2	No	Yes	No
Private ERAD Practice Builder Report Text	1.2.826.0.1.3680043.293.1.0.1	No	Yes	No

SOP Class	SOP Class UID	SCU	SCP	STD
Storage				
Private GE 3D Model Storage	1.2.840.113619.4.26	No	Yes	No
Private GE Collage Storage	1.2.528.11001.5.1.1.1	No	Yes	No
Private GE eNTEGRA Protocol or NM Genie Storage	1.2.840.113619.4.27	No	Yes	No
Private GE PET Raw Data Storage	1.2.840.113619.4.30	No	Yes	No
Private GE RT Plan Storage	1.2.840.113619.4.5.249	No	Yes	No
Private Philips 3D Object Storage	1.3.46.670589.5.0.2.1	No	Yes	No
Private Philips 3D Object Storage (Retired)	1.3.46.670589.5.0.2	No	Yes	No
Private Philips 3D Presentation State Storage	1.3.46.670589.2.5.1.1	No	Yes	No

SOP Class	SOP Class UID	SCU	SCP	STD
Private Philips Composite Object Storage	1.3.46.670589.5.0.4	No	Yes	No
Private Philips HP Live 3D O1 Storage	1.2.840.113543.6.6.1.3.10001	No	Yes	No
Private Philips HP Live 3D O2 Storage	1.2.840.113543.6.6.1.3.10002	No	Yes	No
Private Philips Live Run Storage	1.3.46.670589.7.8.1618510092	No	Yes	No
Private Philips MR Cardio Analysis Storage	1.3.46.670589.5.0.11.1	No	Yes	No
Private Philips MR Cardio Analysis Storage (Retired)	1.3.46.670589.5.0.11	No	Yes	No
Private Philips MR Cardio Profile Storage	1.3.46.670589.5.0.7	No	Yes	No
Private Philips MR Cardio Storage	1.3.46.670589.5.0.8.1	No	Yes	No
Private Philips MR Cardio Storage (Retired)	1.3.46.670589.5.0.8	No	Yes	No

SOP Class	SOP Class UID	SCU	SCP	STD
Private Philips MR Examcard Storage	1.3.46.670589.11.0.0.12.4	No	Yes	No
Private Philips MR Series Data Storage	1.3.46.670589.11.0.0.12.2	No	Yes	No
Private Philips MR Spectrum Storage	1.3.46.670589.11.0.0.12.1	No	Yes	No
Private Philips Perfusion Storage	1.3.46.670589.5.0.13	No	Yes	No
Private Philips Reconstruction Storage	1.3.46.670589.7.8.16185100130	No	Yes	No
Private Philips Run Storage	1.3.46.670589.7.8.16185100129	No	Yes	No
Private Philips Specialised XA Storage	1.3.46.670589.2.3.1.1	No	Yes	No
Private Philips Surface Storage	1.3.46.670589.5.0.3.1	No	Yes	No
Private Philips Surface Storage (Retired)	1.3.46.670589.5.0.3	No	Yes	No

SOP Class	SOP Class UID	SCU	SCP	STD
Private Philips Volume Set Storage	1.3.46.670589.2.11.1.1	No	Yes	No
Private Philips Volume Storage	1.3.46.670589.5.0.1.1	No	Yes	No
Private Philips Volume Storage (Retired)	1.3.46.670589.5.0.1	No	Yes	No
Private Philips VRML Storage	1.3.46.670589.2.8.1.1	No	Yes	No
Private Philips X-Ray MF Storage	1.3.46.670589.7.8.1618510091	No	Yes	No
Private Siemens AX Frame Sets Storage	1.3.12.2.1107.5.99.3.11	No	Yes	No
Private Siemens CSA Non Image Storage	1.3.12.2.1107.5.9.1	No	Yes	No
Private Siemens CT MR Volume Storage	1.3.12.2.1107.5.99.3.10	No	Yes	No
Private TomTec Annotation Storage	1.2.276.0.48.5.1.4.1.1.7	No	Yes	No

Table 1: SOP Classes

2.2.1.2 Association Policies

2.2.1.2.1 General

Ensign AE can accept and propose Association Requests. Ensign will accept Association Requests for Verification, Query/Retrieve, Storage and Storage Commitment Push Model Services.

The following DICOM Standard Application Context Name is accepted and proposed:

Application Context Name	1.2.840.10008.3.1.1.1
--------------------------	-----------------------

2.2.1.2.2 Number of Association

Ensign AE can support multiple Associations requested by remote AEs. The maximum number of concurrent Associations is configurable and set to 'unlimited' by default.

Ensign AE can initiate up to 5 Associations for sending Storage Commitment Push Model to remote AEs

Max concurrent Associations initiated by remote AEs	No Maximum (Configurable)
Max concurrent Associations initiated by Ensign for Storage Commitment Push Model to remote AEs	5

2.2.1.2.3 Asynchronous Nature

Enight AE supports asynchronous communications. The maximum number of asynchronous transactions is configurable and set to 'unlimited' by default.

Max asynchronous transactions

No Maximum (Configurable)

2.2.1.2.4 Implementation Identifying Information

The implementation information identifying this AE is:

Implementation Class UID	1.2.40.0.13.1.3
Implementation Version Name	dcm4che-5.27.2-e

2.2.1.3 Association Initiation Policies

The Enight Storage AE initiates associations for the following real-world activities:

- Move Standardized objects to the Remote Target AE

2.2.1.4 Association Acceptance Policy

2.2.1.4.1 Real-World Activity – Receive Images for Standardization and Commitment Requests

2.2.1.4.1.1 Accepted Presentation Contexts

The Enight Storage AE will accept Presentation Contexts for all SOP Classes listed in the “Enight [Storage Application Entity Specification](#)” sections.

The EnightStorage AE will accept Presentation Contexts for Standardization only for specific SOP Classes listed in the “Enight Storage Application Entity Specification” sections.

The default list of accepted Transfer Syntaxes for each Abstract Syntax is defined below:

Abstract Syntax		Transfer Syntax		Role	Extended Neg.
Name	UID	Name	UID		
Verification	1.2.840.10008.1.1	Implicit VR Little Endian	1.2.840.10008.1.2	SCP	None
Storage Commit Push Model	1.2.840.10008.1.20.1	Implicit VR Little Endian	1.2.840.10008.1.2	SCP	None

Abstract Syntax		Transfer Syntax		Role	Extended Neg.
Name	UID	Name	UID		
Image Storage SOP Classes listed in "Storage AE Spec"		see: Transfer Syntaxes for Image Storage		SCP	None
Video Storage SOP Classes listed in "Storage AE Spec"		see: Transfer Syntaxes for Video Storage		SCP	None
SR Storage SOP Classes listed in "Storage AE Spec"		see: Transfer Syntaxes for SR Storage		SCP	None
Other Storage SOP Classes listed in "Storage AE Spec"		see: Transfer Syntaxes for Other Storage		SCP	None

Table 2: Accepted Presentation Contexts of Ensign Storage AE

Transfer Syntax Name	UID
Implicit VR Little Endian	1.2.840.10008.1.2
Explicit VR Little Endian	1.2.840.10008.1.2.1
JPEG Baseline (Process 1)	1.2.840.10008.1.2.4.50

Transfer Syntax Name	UID
JPEG Extended (Process 2 & 4)	1.2.840.10008.1.2.4.51
JPEG Lossless, Non-Hierarchical (Process 14)	1.2.840.10008.1.2.4.54
JPEG Lossless, Non-Hierarchical, First-Order Prediction (Process 14 [Selection Value 1])	1.2.840.10008.1.2.4.70
JPEG-LS Lossless	1.2.840.10008.1.2.4.80
JPEG-LS Lossy (Near-Lossless)	1.2.840.10008.1.2.4.81
JPEG 2000 (Lossless Only)	1.2.840.10008.1.2.4.90
JPEG 2000	1.2.840.10008.1.2.4.91
RLE Lossless	1.2.840.10008.1.2.5

Table 3: Transfer Syntaxes for Image Storage

Transfer Syntax Name	UID
JPEG Baseline (Process 1)	1.2.840.10008.1.2.4.50
MPEG2 Main Profile @ Main Level	1.2.840.10008.1.2.4.100
MPEG2 Main Profile @ High Level	1.2.840.10008.1.2.4.101
MPEG-4 AVC/H.264 High Profile / Level 4.1	1.2.840.10008.1.2.4.102
MPEG-4 AVC/H.264 BD-compatible High Profile / Level 4.1	1.2.840.10008.1.2.4.103
MPEG-4 AVC/H.264 High Profile / Level 4.2 For 2D Video	1.2.840.10008.1.2.4.104
MPEG-4 AVC/H.264 High Profile / Level 4.2 For 3D Video	1.2.840.10008.1.2.4.105
MPEG-4 AVC/H.264 Stereo High Profile / Level 4.2	1.2.840.10008.1.2.4.106

Table 4: Transfer Syntaxes for Video Storage

Transfer Syntax Name	UID
Implicit VR Little Endian	1.2.840.10008.1.2
Explicit VR Little Endian	1.2.840.10008.1.2.1
Deflated Explicit VR Little Endian	1.2.840.10008.1.2.1.99

Table 5: Transfer Syntaxes for SR Storage

Transfer Syntax Name	UID
Implicit VR Little Endian	1.2.840.10008.1.2
Explicit VR Little Endian	1.2.840.10008.1.2.1

Table 6: Transfer Syntaxes for Other Storage

2.2.2 Query/Retrieve Application Entity Specification

2.2.2.1 SOP Classes

EnlightQuery/Retrieve AE provides Standard Conformance to the following SOP Classes:

SOP Class	SOP Class UID	SCU	SCP
Verification SOP Class	1.2.840.10008.1.1	Yes	Yes
Patient Root Query/Retrieve Information Model - FIND	1.2.840.10008.5.1.4.1.2.1.1	No	Yes
Patient Root Query/Retrieve Information Model - MOVE	1.2.840.10008.5.1.4.1.2.1.2	No	Yes
Patient Root Query/Retrieve Information Model - GET	1.2.840.10008.5.1.4.1.2.1.3	No	Yes
Study Root Query/Retrieve Information Model - FIND	1.2.840.10008.5.1.4.1.2.2.1	Yes	Yes
Study Root Query/Retrieve Information Model - MOVE	1.2.840.10008.5.1.4.1.2.2.2	Yes	Yes
Study Root Query/Retrieve Information Model - GET	1.2.840.10008.5.1.4.1.2.2.3	No	Yes
Image Storage SOP Classes			
Computed Radiography Image Storage	1.2.840.10008.5.1.4.1.1.1	Yes	No

SOP Class	SOP Class UID	SCU	SCP
Digital X-Ray Image Storage – For Presentation	1.2.840.10008.5.1.4.1.1.1.1	Yes	No
Digital X-Ray Image Storage – For Processing	1.2.840.10008.5.1.4.1.1.1.1	Yes	No
Digital Mammography X-Ray Image Storage – For Presentation	1.2.840.10008.5.1.4.1.1.1.2	Yes	No
Digital Mammography X-Ray Image Storage – For Processing	1.2.840.10008.5.1.4.1.1.1.2.1	Yes	No
Digital Intra-Oral X-Ray Image Storage – For Presentation	1.2.840.10008.5.1.4.1.1.1.3	Yes	No
Digital Intra-Oral X-Ray Image Storage – For Processing	1.2.840.10008.5.1.4.1.1.1.3.1	Yes	No
CT Image Storage	1.2.840.10008.5.1.4.1.1.2	Yes	No
Enhanced CT Image Storage	1.2.840.10008.5.1.4.1.1.2.1	Yes	No
Legacy Converted Enhanced CT Image Storage	1.2.840.10008.5.1.4.1.1.2.2	Yes	No

SOP Class	SOP Class UID	SCU	SCP
Ultrasound Multi-frame Image Storage (Retired)	1.2.840.10008.5.1.4.1.1.3	Yes	No
Ultrasound Multi-frame Image Storage	1.2.840.10008.5.1.4.1.1.3.1	Yes	No
MR Image Storage	1.2.840.10008.5.1.4.1.1.4	Yes	No
Enhanced MR Image Storage	1.2.840.10008.5.1.4.1.1.4.1	Yes	No
Enhanced MR Color Image Storage	1.2.840.10008.5.1.4.1.1.4.3	Yes	No
Legacy Converted Enhanced MR Image Storage	1.2.840.10008.5.1.4.1.1.4.4	Yes	No
Nuclear Medicine Image Storage (Retired)	1.2.840.10008.5.1.4.1.1.5	Yes	No
Ultrasound Image Storage (Retired)	1.2.840.10008.5.1.4.1.1.6	Yes	No
Ultrasound Image Storage	1.2.840.10008.5.1.4.1.1.6.1	Yes	No

SOP Class	SOP Class UID	SCU	SCP
Enhanced US Volume Storage	1.2.840.10008.5.1.4.1.1.6.2	Yes	No
Secondary Capture Image Storage	1.2.840.10008.5.1.4.1.1.7	Yes	No
Multi-frame Grayscale Byte Secondary Capture Image Storage	1.2.840.10008.5.1.4.1.1.7.2	Yes	No
Multi-frame Grayscale Word Secondary Capture Image Storage	1.2.840.10008.5.1.4.1.1.7.3	Yes	No
Multi-frame True Color Secondary Capture Image Storage	1.2.840.10008.5.1.4.1.1.7.4	Yes	No
X-Ray Angiographic Image Storage	1.2.840.10008.5.1.4.1.1.12.1	Yes	No
Enhanced XA Image Storage	1.2.840.10008.5.1.4.1.1.12.1.1	Yes	No
X-Ray Radiofluoroscopic Image Storage	1.2.840.10008.5.1.4.1.1.12.2	Yes	No
Enhanced XRF Image Storage	1.2.840.10008.5.1.4.1.1.12.2.1	Yes	No

SOP Class	SOP Class UID	SCU	SCP
X-Ray Angiographic Bi-Plane Image Storage (Retired)	1.2.840.10008.5.1.4.1.1.12.3	Yes	No
X-Ray 3D Angiographic Image Storage	1.2.840.10008.5.1.4.1.1.13.1.1	Yes	No
X-Ray 3D Craniofacial Image Storage	1.2.840.10008.5.1.4.1.1.13.1.2	Yes	No
Breast Tomosynthesis Image Storage	1.2.840.10008.5.1.4.1.1.13.1.3	Yes	No
Breast Projection X-Ray Image Storage – For Presentation	1.2.840.10008.5.1.4.1.1.13.1.4	Yes	No
Breast Projection X-Ray Image Storage – For Processing	1.2.840.10008.5.1.4.1.1.13.1.5	Yes	No
Intravascular Optical Coherence Tomography Image Storage – For Presentation	1.2.840.10008.5.1.4.1.1.14.1	Yes	No
Intravascular Optical Coherence Tomography Image Storage – For Processing	1.2.840.10008.5.1.4.1.1.14.2	Yes	No

SOP Class	SOP Class UID	SCU	SCP
Nuclear Medicine Image Storage	1.2.840.10008.5.1.4.1.1.20	Yes	No
VL Image Storage – Trial (Retired)	1.2.840.10008.5.1.4.1.1.77.1	Yes	No
VL Multi-frame Image Storage – Trial (Retired)	1.2.840.10008.5.1.4.1.1.77.2	Yes	No
VL Endoscopic Image Storage	1.2.840.10008.5.1.4.1.1.77.1.1	Yes	No
VL Microscopic Image Storage	1.2.840.10008.5.1.4.1.1.77.1.2	Yes	No
VL Slide–Coordinates Microscopic Image Storage	1.2.840.10008.5.1.4.1.1.77.1.3	Yes	No
VL Photographic Image Storage	1.2.840.10008.5.1.4.1.1.77.1.4	Yes	No
Ophthalmic Photography 8 Bit Image Storage	1.2.840.10008.5.1.4.1.1.77.1.5.1	Yes	No
Ophthalmic Photography 16 Bit Image Storage	1.2.840.10008.5.1.4.1.1.77.1.5.2	Yes	No

SOP Class	SOP Class UID	SCU	SCP
Ophthalmic Tomography Image Storage	1.2.840.10008.5.1.4.1.1.77.1.5.4	Yes	No
Wide Field Ophthalmic Photography Stereographic Projection Image Storage	1.2.840.10008.5.1.4.1.1.77.1.5.5	Yes	No
Wide Field Ophthalmic Photography 3D Coordinates Image Storage	1.2.840.10008.5.1.4.1.1.77.1.5.6	Yes	No
Ophthalmic Optical Coherence Tomography EnFace Image Storage	1.2.840.10008.5.1.4.1.1.77.1.5.7	Yes	No
Ophthalmic Optical Coherence Tomography Bscan Volume Analysis Storage	1.2.840.10008.5.1.4.1.1.77.1.5.8	Yes	No
VL Whole Slide Microscopy Image Storage	1.2.840.10008.5.1.4.1.1.77.1.6	Yes	No
Dermoscopic Photography Image Storage	1.2.840.10008.5.1.4.1.1.77.1.7	Yes	No
Ophthalmic Thickness Map Storage	1.2.840.10008.5.1.4.1.1.81.1	Yes	No

SOP Class	SOP Class UID	SCU	SCP
Corneal Topography Map Storage	1.2.840.10008.5.1.4.1.1.82.1	Yes	No
Positron Emission Tomography Image Storage	1.2.840.10008.5.1.4.1.1.128	Yes	No
Legacy Converted Enhanced PET Image Storage	1.2.840.10008.5.1.4.1.1.128.1	Yes	No
Enhanced PET Image Storage	1.2.840.10008.5.1.4.1.1.130	Yes	No
RT Image Storage	1.2.840.10008.5.1.4.1.1.481.1	Yes	No
Private Fuji CR Image Storage	1.2.392.200036.9125.1.1.2	Yes	No
Private GE Dicom CT Image Info Object	1.2.840.113619.4.3	Yes	No
Private GE Dicom Display Image Info Object	1.2.840.113619.4.4	Yes	No
Private GE Dicom MR Image Info Object	1.2.840.113619.4.2	Yes	No

SOP Class	SOP Class UID	SCU	SCP
Private Philips CT Synthetic Image Storage	1.3.46.670589.5.0.9	Yes	No
Private Philips CX Image Storage	1.3.46.670589.2.4.1.1	Yes	No
Private Philips CX Synthetic Image Storage	1.3.46.670589.5.0.12	Yes	No
Private Philips MR Color Image Storage	1.3.46.670589.11.0.0.12.3	Yes	No
Private Philips MR Synthetic Image Storage	1.3.46.670589.5.0.10	Yes	No
Private Philips Perfusion Image Storage	1.3.46.670589.5.0.14	Yes	No
Private PixelMed Floating Point Image Storage	1.3.6.1.4.1.5962.301.9	Yes	No
Private PixelMed Legacy Converted Enhanced CT Image Storage	1.3.6.1.4.1.5962.301.1	Yes	No
Private PixelMed Legacy Converted Enhanced MR Image Storage	1.3.6.1.4.1.5962.301.2	Yes	No

SOP Class	SOP Class UID	SCU	SCP
Private PixelMed Legacy Converted Enhanced PET Image Storage	1.3.6.1.4.1.5962.301.3	Yes	No
Private PMOD Multi-frame Image Storage	2.16.840.1.114033.5.1.4.1.1.130	Yes	No
Private Toshiba US Image Storage	1.2.392.200036.9116.7.8.1.1.1	Yes	No
Video Storage SOP Classes			
Video Endoscopic Image Storage	1.2.840.10008.5.1.4.1.1.77.1.1.1	Yes	No
Video Microscopic Image Storage	1.2.840.10008.5.1.4.1.1.77.1.2.1	Yes	No
Video Photographic Image Storage	1.2.840.10008.5.1.4.1.1.77.1.4.1	Yes	No
Structured Report Storage SOP Classes			
Spectacle Prescription Report Storage	1.2.840.10008.5.1.4.1.1.78.6	Yes	No

SOP Class	SOP Class UID	SCU	SCP
Macular Grid Thickness and Volume Report Storage	1.2.840.10008.5.1.4.1.1.79.1	Yes	No
Basic Text SR Storage	1.2.840.10008.5.1.4.1.1.88.11	Yes	No
Enhanced SR Storage	1.2.840.10008.5.1.4.1.1.88.22	Yes	No
Comprehensive SR Storage	1.2.840.10008.5.1.4.1.1.88.33	Yes	No
Comprehensive 3D SR Storage	1.2.840.10008.5.1.4.1.1.88.34	Yes	No
Extensible SR Storage	1.2.840.10008.5.1.4.1.1.88.35	Yes	No
Procedure Log Storage	1.2.840.10008.5.1.4.1.1.88.40	Yes	No
Mammography CAD SR Storage	1.2.840.10008.5.1.4.1.1.88.50	Yes	No
Key Object Selection Document Storage	1.2.840.10008.5.1.4.1.1.88.59	Yes	No

SOP Class	SOP Class UID	SCU	SCP
Chest CAD SR Storage	1.2.840.10008.5.1.4.1.1.88.65	Yes	No
X-Ray Radiation Dose SR Storage	1.2.840.10008.5.1.4.1.1.88.67	Yes	No
Radiopharmaceutical Radiation Dose SR Storage	1.2.840.10008.5.1.4.1.1.88.68	Yes	No
Colon CAD SR Storage	1.2.840.10008.5.1.4.1.1.88.69	Yes	No
Implantation Plan SR Storage	1.2.840.10008.5.1.4.1.1.88.70	Yes	No
Acquisition Context SR Storage	1.2.840.10008.5.1.4.1.1.88.71	Yes	No
Simplified Adult Echo SR Storage	1.2.840.10008.5.1.4.1.1.88.72	Yes	No
Patient Radiation Dose SR Storage	1.2.840.10008.5.1.4.1.1.88.73	Yes	No
Planned Imaging Agent Administration SR Storage	1.2.840.10008.5.1.4.1.1.88.74	Yes	No

SOP Class	SOP Class UID	SCU	SCP
Performed Imaging Agent Administration SR Storage	1.2.840.10008.5.1.4.1.1.88.75	Yes	No
Other SOP Classes			
Stored Print Storage SOP Class (Retired)	1.2.840.10008.5.1.1.27	Yes	No
Hardcopy Grayscale Image Storage SOP Class (Retired)	1.2.840.10008.5.1.1.29	Yes	No
Hardcopy Color Image Storage SOP Class (Retired)	1.2.840.10008.5.1.1.30	Yes	No
MR Spectroscopy Storage	1.2.840.10008.5.1.4.1.1.4.2	Yes	No
Multi-frame Single Bit Secondary Capture Image Storage	1.2.840.10008.5.1.4.1.1.7.1	Yes	No
Standalone Overlay Storage Retired	1.2.840.10008.5.1.4.1.1.8	Yes	No
Standalone Curve Storage Retired	1.2.840.10008.5.1.4.1.1.9	Yes	No

SOP Class	SOP Class UID	SCU	SCP
12-lead ECG Waveform Storage	1.2.840.10008.5.1.4.1.1.9.1.1	Yes	No
General ECG Waveform Storage	1.2.840.10008.5.1.4.1.1.9.1.2	Yes	No
Ambulatory ECG Waveform Storage	1.2.840.10008.5.1.4.1.1.9.1.3	Yes	No
Hemodynamic Waveform Storage	1.2.840.10008.5.1.4.1.1.9.2.1	Yes	No
Cardiac Electrophysiology Waveform Storage	1.2.840.10008.5.1.4.1.1.9.3.1	Yes	No
Basic Voice Audio Waveform Storage	1.2.840.10008.5.1.4.1.1.9.4.1	Yes	No
General Audio Waveform Storage	1.2.840.10008.5.1.4.1.1.9.4.2	Yes	No
Arterial Pulse Waveform Storage	1.2.840.10008.5.1.4.1.1.9.5.1	Yes	No
Respiratory Waveform Storage	1.2.840.10008.5.1.4.1.1.9.6.1	Yes	No

SOP Class	SOP Class UID	SCU	SCP
Multi-channel Respiratory Waveform Storage	1.2.840.10008.5.1.4.1.1.9.6.2	Yes	No
Routine Scalp Electroencephalogram Waveform Storage	1.2.840.10008.5.1.4.1.1.9.7.1	Yes	No
Electromyogram Waveform Storage	1.2.840.10008.5.1.4.1.1.9.7.2	Yes	No
Electrooculogram Waveform Storage	1.2.840.10008.5.1.4.1.1.9.7.3	Yes	No
Sleep Electroencephalogram Waveform Storage	1.2.840.10008.5.1.4.1.1.9.7.4	Yes	No
Body Position Waveform Storage	1.2.840.10008.5.1.4.1.1.9.8.1	Yes	No
Standalone Modality LUT Storage Retired	1.2.840.10008.5.1.4.1.1.10	Yes	No
Standalone VOI LUT Storage Retired	1.2.840.10008.5.1.4.1.1.11	Yes	No
Grayscale Softcopy Presentation State Storage SOP Class	1.2.840.10008.5.1.4.1.1.11.1	Yes	No

SOP Class	SOP Class UID	SCU	SCP
Color Softcopy Presentation State Storage SOP Class	1.2.840.10008.5.1.4.1.1.11.2	Yes	No
Pseudo-Color Softcopy Presentation State Storage SOP Class	1.2.840.10008.5.1.4.1.1.11.3	Yes	No
Blending Softcopy Presentation State Storage SOP Class	1.2.840.10008.5.1.4.1.1.11.4	Yes	No
XA/XRF Grayscale Softcopy Presentation State Storage	1.2.840.10008.5.1.4.1.1.11.5	Yes	No
Grayscale Planar MPR Volumetric Presentation State Storage	1.2.840.10008.5.1.4.1.1.11.6	Yes	No
Compositing Planar MPR Volumetric Presentation State Storage	1.2.840.10008.5.1.4.1.1.11.7	Yes	No
Advanced Blending Presentation State Storage	1.2.840.10008.5.1.4.1.1.11.8	Yes	No
Volume Rendering Volumetric Presentation State Storage	1.2.840.10008.5.1.4.1.1.11.9	Yes	No
Segmented Volume Rendering Volumetric Presentation State Storage	1.2.840.10008.5.1.4.1.1.11.10	Yes	No

SOP Class	SOP Class UID	SCU	SCP
Multiple Volume Rendering Volumetric Presentation State Storage	1.2.840.10008.5.1.4.1.11.11	Yes	No
Parametric Map Storage	1.2.840.10008.5.1.4.1.130	Yes	No
Raw Data Storage	1.2.840.10008.5.1.4.1.166	Yes	No
Spatial Registration Storage	1.2.840.10008.5.1.4.1.166.1	Yes	No
Spatial Fiducials Storage	1.2.840.10008.5.1.4.1.166.2	Yes	No
Deformable Spatial Registration Storage	1.2.840.10008.5.1.4.1.166.3	Yes	No
Segmentation Storage	1.2.840.10008.5.1.4.1.166.4	Yes	No
Surface Segmentation Storage	1.2.840.10008.5.1.4.1.166.5	Yes	No
Tractography Results Storage	1.2.840.10008.5.1.4.1.166.6	Yes	No

SOP Class	SOP Class UID	SCU	SCP
Real World Value Mapping Storage	1.2.840.10008.5.1.4.1.1.67	Yes	No
Surface Scan Mesh Storage	1.2.840.10008.5.1.4.1.1.68.1	Yes	No
Surface Scan Point Cloud Storage	1.2.840.10008.5.1.4.1.1.68.2	Yes	No
Stereometric Relationship Storage	1.2.840.10008.5.1.4.1.1.77.1.5.3	Yes	No
Lensometry Measurements Storage	1.2.840.10008.5.1.4.1.1.78.1	Yes	No
Autorefracton Measurements Storage	1.2.840.10008.5.1.4.1.1.78.2	Yes	No
Keratometry Measurements Storage	1.2.840.10008.5.1.4.1.1.78.3	Yes	No
Subjective Refraction Measurements Storage	1.2.840.10008.5.1.4.1.1.78.4	Yes	No
Visual Acuity Measurements Storage	1.2.840.10008.5.1.4.1.1.78.5	Yes	No

SOP Class	SOP Class UID	SCU	SCP
Ophthalmic Axial Measurements Storage	1.2.840.10008.5.1.4.1.1.78.7	Yes	No
Intraocular Lens Calculations Storage	1.2.840.10008.5.1.4.1.1.78.8	Yes	No
Ophthalmic Visual Field Static Perimetry Measurements Storage	1.2.840.10008.5.1.4.1.1.80.1	Yes	No
BasicStructuredDisplayStorage	1.2.840.10008.5.1.4.1.1.131	Yes	No
Encapsulated PDF Storage	1.2.840.10008.5.1.4.1.1.104.1	Yes	No
Encapsulated CDA Storage	1.2.840.10008.5.1.4.1.1.104.2	Yes	No
Encapsulated STL Storage	1.2.840.10008.5.1.4.1.1.104.3	Yes	No
Encapsulated OBJ Storage	1.2.840.10008.5.1.4.1.1.104.4	Yes	No
Encapsulated MTL Storage	1.2.840.10008.5.1.4.1.1.104.5	Yes	No

SOP Class	SOP Class UID	SCU	SCP
Standalone PET Curve Storage (Retired)	1.2.840.10008.5.1.4.1.1.129	Yes	No
Text SR Storage Trial (Retired)	1.2.840.10008.5.1.4.1.1.88.1	Yes	No
Audio SR Storage Trial (Retired)	1.2.840.10008.5.1.4.1.1.88.2	Yes	No
Detail SR Storage Trial (Retired)	1.2.840.10008.5.1.4.1.1.88.3	Yes	No
Comprehensive SR Storage Trial (Retired)	1.2.840.10008.5.1.4.1.1.88.4	Yes	No
Content Assessment Results Storage	1.2.840.10008.5.1.4.1.1.90.1	Yes	No
CT Performed Procedure Protocol Storage	1.2.840.10008.5.1.4.1.1.200.2	Yes	No
XA Performed Procedure Protocol Storage	1.2.840.10008.5.1.4.1.1.200.8	Yes	No
RT Dose Storage	1.2.840.10008.5.1.4.1.1.481.2	Yes	No

SOP Class	SOP Class UID	SCU	SCP
RT Structure Set Storage	1.2.840.10008.5.1.4.1.1.481.3	Yes	No
RT Beams Treatment Record Storage	1.2.840.10008.5.1.4.1.1.481.4	Yes	No
RT Plan Storage	1.2.840.10008.5.1.4.1.1.481.5	Yes	No
RT Brachy Treatment Record Storage	1.2.840.10008.5.1.4.1.1.481.6	Yes	No
RT Treatment Summary Record Storage	1.2.840.10008.5.1.4.1.1.481.7	Yes	No
RT Ion Plan Storage	1.2.840.10008.5.1.4.1.1.481.8	Yes	No
RT Ion Beams Treatment Record Storage	1.2.840.10008.5.1.4.1.1.481.9	Yes	No
RT Physician Intent Storage	1.2.840.10008.5.1.4.1.1.481.10	Yes	No
RT Segment Annotation Storage	1.2.840.10008.5.1.4.1.1.481.11	Yes	No

SOP Class	SOP Class UID	SCU	SCP
RT Radiation Set Storage	1.2.840.10008.5.1.4.1.1.481.12	Yes	No
C-Arm Photon-Electron Radiation Storage	1.2.840.10008.5.1.4.1.1.481.13	Yes	No
Tomotherapeutic Radiation Storage	1.2.840.10008.5.1.4.1.1.481.14	Yes	No
Robotic-Arm Radiation Storage	1.2.840.10008.5.1.4.1.1.481.15	Yes	No
RT Radiation Record Set Storage	1.2.840.10008.5.1.4.1.1.481.16	Yes	No
RT Radiation Salvage Record Storage	1.2.840.10008.5.1.4.1.1.481.17	Yes	No
Tomotherapeutic Radiation Record Storage	1.2.840.10008.5.1.4.1.1.481.18	Yes	No
C-Arm Photon-Electron Radiation Record Storage	1.2.840.10008.5.1.4.1.1.481.19	Yes	No
Robotic Radiation Record Storage	1.2.840.10008.5.1.4.1.1.481.20	Yes	No

SOP Class	SOP Class UID	SCU	SCP
RT Beams Delivery Instruction Storage	1.2.840.10008.5.1.4.34.7	Yes	No
RT Brachy Application Setup Delivery Instruction Storage	1.2.840.10008.5.1.4.34.10	Yes	No
Private Agfa Arrival Transaction	1.2.124.113532.3500.8.1	Yes	No
Private Agfa Basic Attribute Presentation State	1.2.124.113532.3500.7	Yes	No
Private Agfa Dictation Transaction	1.2.124.113532.3500.8.2	Yes	No
Private Agfa Report Approval Transaction	1.2.124.113532.3500.8.4	Yes	No
Private Agfa Report Transcription Transaction	1.2.124.113532.3500.8.3	Yes	No
Private ERAD Practice Builder Report Dictation Storage	1.2.826.0.1.3680043.293.1.0.2	Yes	No
Private ERAD Practice Builder Report Text Storage	1.2.826.0.1.3680043.293.1.0.1	Yes	No

SOP Class	SOP Class UID	SCU	SCP
Private GE 3D Model Storage	1.2.840.113619.4.26	Yes	No
Private GE Collage Storage	1.2.528.1.1001.5.1.1.1	Yes	No
Private GE eNTEGRA Protocol or NM Genie Storage	1.2.840.113619.4.27	Yes	No
Private GE PET Raw Data Storage	1.2.840.113619.4.30	Yes	No
Private GE RT Plan Storage	1.2.840.113619.4.5.249	Yes	No
Private Philips 3D Object Storage	1.3.46.670589.5.0.2.1	Yes	No
Private Philips 3D Object Storage (Retired)	1.3.46.670589.5.0.2	Yes	No
Private Philips 3D Presentation State Storage	1.3.46.670589.2.5.1.1	Yes	No
Private Philips Composite Object Storage	1.3.46.670589.5.0.4	Yes	No

SOP Class	SOP Class UID	SCU	SCP
Private Philips HP Live 3D O1 Storage	1.2.840.113543.6.6.1.3.10001	Yes	No
Private Philips HP Live 3D O2 Storage	1.2.840.113543.6.6.1.3.10002	Yes	No
Private Philips Live Run Storage	1.3.46.670589.7.8.1618510092	Yes	No
Private Philips MR Cardio Analysis Storage	1.3.46.670589.5.0.11.1	Yes	No
Private Philips MR Cardio Analysis Storage (Retired)	1.3.46.670589.5.0.11	Yes	No
Private Philips MR Cardio Profile Storage	1.3.46.670589.5.0.7	Yes	No
Private Philips MR Cardio Storage	1.3.46.670589.5.0.8.1	Yes	No
Private Philips MR Cardio Storage (Retired)	1.3.46.670589.5.0.8	Yes	No
Private Philips MR Examcard Storage	1.3.46.670589.11.0.0.12.4	Yes	No

SOP Class	SOP Class UID	SCU	SCP
Private Philips MR Series Data Storage	1.3.46.670589.11.0.0.12.2	Yes	No
Private Philips MR Spectrum Storage	1.3.46.670589.11.0.0.12.1	Yes	No
Private Philips Perfusion Storage	1.3.46.670589.5.0.13	Yes	No
Private Philips Reconstruction Storage	1.3.46.670589.7.8.16185100130	Yes	No
Private Philips Run Storage	1.3.46.670589.7.8.16185100129	Yes	No
Private Philips Specialised XA Storage	1.3.46.670589.2.3.1.1	Yes	No
Private Philips Surface Storage	1.3.46.670589.5.0.3.1	Yes	No
Private Philips Surface Storage (Retired)	1.3.46.670589.5.0.3	Yes	No
Private Philips Volume Set Storage	1.3.46.670589.2.11.1.1	Yes	No

SOP Class	SOP Class UID	SCU	SCP
Private Philips Volume Storage	1.3.46.670589.5.0.11	Yes	No
Private Philips Volume Storage (Retired)	1.3.46.670589.5.0.1	Yes	No
Private Philips VRML Storage	1.3.46.670589.2.8.11	Yes	No
Private Philips X-Ray MF Storage	1.3.46.670589.7.8.1618510091	Yes	No
Private Siemens AX Frame Sets Storage	1.3.12.2.1107.5.99.3.11	Yes	No
Private Siemens CSA Non Image Storage	1.3.12.2.1107.5.9.1	Yes	No
Private Siemens CT MR Volume Storage	1.3.12.2.1107.5.99.3.10	Yes	No
Private TomTec Annotation Storage	1.2.276.0.48.5.1.4.1.1.7	Yes	No

2.2.2.2 Association Policies

2.2.2.2.1 General

The following DICOM Standard Application Context Name is accepted and proposed:

Application Context Name	1.2.840.10008.3.1.1.1
--------------------------	-----------------------

2.2.2.2.2 Number of Association

Max concurrent Associations initiated by remote AEs	No Maximum (Configurable)
Max concurrent Associations initiated by Query/Retrieve AE	No Maximum

2.2.2.2.3 Asynchronous Nature

Enight Query/Retrieve AE supports asynchronous communications. The maximum number of asynchronous transactions is configurable and set to 'unlimited' by default.

Max asynchronous transactions	No Maximum (Configurable)
-------------------------------	---------------------------

2.2.2.2.4 Implementation Identifying Information

The implementation information identifying this AE is:

Implementation Class UID	1.2.40.0.13.1.3
--------------------------	-----------------

Implementation Version Name

dcm4che-5.27.0

2.2.2.3 Association Initiation Policy

2.2.2.3.1 Proposed Presentation Contexts

The Query/Retrieve Application Entity will propose Presentation Contexts for Verification, Study Root Query/Retrieve Information Model – FIND, Study Root Query/Retrieve Information Model – MOVE and of supported Storage SOP Classes.

Presentation Context Table

Abstract Syntax		Transfer Syntax		Role	Extended Neg.
Name	UID	Name	UID		
Verification	1.2.840.10008.1.1	Implicit VR Little Endian	1.2.840.10008.1.2	SCU	None
Study Root Query/Retrieve	1.2.840.10008.5.1.4.1.2.2.1	Implicit VR Little Endian	1.2.840.10008.1.2	SCU	None

Presentation Context Table

Abstract Syntax		Transfer Syntax		Role	Extended Neg.
Name	UID	Name	UID		
Information Model - FIND					
Study Root Query/Retrieve Information Model - MOVE	1.2.840.10008.5.1.4.1.2.2.2	Implicit VR Little Endian	1.2.840.10008.1.2	SCU	None
Image Storage SOP Classes listed in "Query/Retrieve AE Spec"		see: Transfer Syntaxes for Image Storage		SCU	None
Video Storage SOP Classes listed in "Query/Retrieve AE Spec"		see: Transfer Syntaxes for Video Storage		SCU	None

Presentation Context Table					
Abstract Syntax		Transfer Syntax		Role	Extended Neg.
Name	UID	Name	UID		
SR Storage SOP Classes listed in "Query/Retrieve AE Spec"		see: Transfer Syntaxes for SR Storage		SCU	None
Other Storage SOP Classes listed in "Query/Retrieve AE Spec"		see: Transfer Syntaxes for Other Storage		SCU	None

Table 7: Proposed Presentation Contexts of Ensign Query/Retrieve AE

Transfer Syntax Name	UID
Implicit VR Little Endian	1.2.840.10008.1.2
Explicit VR Little Endian	1.2.840.10008.1.2.1

Transfer Syntax Name	UID
JPEG Baseline (Process 1)	1.2.840.10008.1.2.4.50
JPEG Extended (Process 2 & 4)	1.2.840.10008.1.2.4.51
JPEG Lossless, Non-Hierarchical (Process 14)	1.2.840.10008.1.2.4.54
JPEG Lossless, Non-Hierarchical, First-Order Prediction (Process 14 [Selection Value 1])	1.2.840.10008.1.2.4.70
JPEG-LS Lossless	1.2.840.10008.1.2.4.80
JPEG-LS Lossy (Near-Lossless)	1.2.840.10008.1.2.4.81
JPEG 2000 (Lossless Only)	1.2.840.10008.1.2.4.90
JPEG 2000	1.2.840.10008.1.2.4.91
RLE Lossless	1.2.840.10008.1.2.5

Table 8: Transfer Syntaxes for Image Storage

Transfer Syntax Name	UID
JPEG Baseline (Process 1)	1.2.840.10008.1.2.4.50
MPEG2 Main Profile @ Main Level	1.2.840.10008.1.2.4.100
MPEG2 Main Profile @ High Level	1.2.840.10008.1.2.4.101
MPEG-4 AVC/H.264 High Profile / Level 4.1	1.2.840.10008.1.2.4.102
MPEG-4 AVC/H.264 BD-compatible High Profile / Level 4.1	1.2.840.10008.1.2.4.103
MPEG-4 AVC/H.264 High Profile / Level 4.2 For 2D Video	1.2.840.10008.1.2.4.104
MPEG-4 AVC/H.264 High Profile / Level 4.2 For 3D Video	1.2.840.10008.1.2.4.105
MPEG-4 AVC/H.264 Stereo High Profile / Level 4.2	1.2.840.10008.1.2.4.106

Table 9: Transfer Syntaxes for Video Storage

Transfer Syntax Name	UID
Implicit VR Little Endian	1.2.840.10008.1.2
Explicit VR Little Endian	1.2.840.10008.1.2.1
Deflated Explicit VR Little Endian	1.2.840.10008.1.2.1.99

Table 10: Transfer Syntaxes for SR Storage

Transfer Syntax Name	UID
Implicit VR Little Endian	1.2.840.10008.1.2
Explicit VR Little Endian	1.2.840.10008.1.2.1

Service Status	Further Meaning	Error Code	Details
Success	Success	0000	The SCP has successfully stored the exported SOP Instance. A message is sent to the QUERY-RETRIEVE-SCP AE indicating successful export. The QUERY-RETRIEVE-SCP AE will send the appropriate PENDING or SUCCESS Status in the C-MOVE Response. Success indication message is output to the Service Logs. No message is posted to the User Interface.
Refused	Out of Resources	A700 - A7FF	This is treated as a permanent Failure. A message is sent to the QUERY-RETRIEVE-SCP AE indicating an export failure and the Association is released. The QUERY-RETRIEVE-SCP AE will send an appropriate Status in the C-MOVE Response. Error indication message is output to the Service Logs. No message is posted to the User Interface.
Error	Data Set does not match SOP Class	A900 - A9FF	This is treated as a permanent Failure. A message is sent to the QUERY-RETRIEVE-SCP AE indicating an export failure and the Association is released. The QUERY-RETRIEVE-SCP AE will send an appropriate Status in the C-MOVE Response. Error indication message is output to the Service Logs. No message is posted to the User Interface.

Service Status	Further Meaning	Error Code	Details
Error	Cannot Understand	C000 - CFFF	This is treated as a permanent Failure. A message is sent to the QUERY-RETRIEVE-SCP AE indicating an export failure and the Association is released. The QUERY-RETRIEVE-SCP AE will send an appropriate Status in the C-MOVE Response. Error indication message is output to the Service Logs. No message is posted to the User Interface.
Warning	Coercion of Data Elements	B000	Image transmission is considered successful. A message is sent to the QUERY-RETRIEVE-SCP AE indicating successful export. The QUERY-RETRIEVE-SCP AE will send the appropriate PENDING or SUCCESS Status in the C-MOVE Response. Warning indication message is output to the Service Logs. No message is posted to the User Interface.
Warning	Data Set does not match SOP Class	B007	Image transmission is considered successful. A message is sent to the QUERY-RETRIEVE-SCP AE indicating successful export. The QUERY-RETRIEVE-SCP AE will send the appropriate PENDING or SUCCESS Status in the C-MOVE Response. Warning indication message is output to the Service Logs. No message is posted to the User Interface.

Service Status	Further Meaning	Error Code	Details
Warning	Elements Discarded	B006	Image transmission is considered successful. A message is sent to the QUERY-RETRIEVE-SCP AE indicating successful export. The QUERY-RETRIEVE-SCP AE will send the appropriate PENDING or SUCCESS Status in the C-MOVE Response. Warning indication message is output to the Service Logs. No message is posted to the User Interface.
Warning	Attribute List Error	0107	Image transmission is considered successful. A message is sent to the QUERY-RETRIEVE-SCP AE indicating successful export. The QUERY-RETRIEVE-SCP AE will send the appropriate PENDING or SUCCESS Status in the C-MOVE Response. Warning indication message is output to the Service Logs. No message is posted to the User Interface.
Warning	Attribute Value Out of Range	0116	Image transmission is considered successful. A message is sent to the QUERY-RETRIEVE-SCP AE indicating successful export. The QUERY-RETRIEVE-SCP AE will send the appropriate PENDING or SUCCESS Status in the C-MOVE Response. Warning indication message is output to the Service Logs. No message is posted to the User Interface.

Service Status	Further Meaning	Error Code	Details
		Any other status code.	This is treated as a permanent Failure. A message is sent to the QUERY-RETRIEVE-SCP AE indicating an export failure and the Association is released. The QUERY-RETRIEVE-SCP AE will send an appropriate Status in the C-MOVE Response. Error indication message is output to the Service Logs. No message is posted to the User Interface.

2.2.2.4 Association Acceptance Policy

2.2.2.4.1 Proposed Presentation Contexts

The Query/Retrieve Application Entity will propose Presentation Contexts for Verification, Study Root Query/Retrieve Information Model - FIND, Study Root Query/Retrieve Information Model - MOVE and of supported Storage SOP Classes.

Presentation context table

Abstract Syntax		Transfer Syntax		Role	Extended Neg.
Name	UID	Name	UID		
Verification	1.2.840.10008.1.1	Implicit VR Little Endian	1.2.840.10008.1.2	SCU	None
Study Root Query/Retrieve Information Model - FIND	1.2.840.10008.5.1.4.1.2.2.1	Implicit VR Little Endian	1.2.840.10008.1.2	SCU	None
Study Root Query/Retrieve Information Model - MOVE	1.2.840.10008.5.1.4.1.2.2.2	Implicit VR Little Endian	1.2.840.10008.1.2	SCU	None

Presentation context table					
Abstract Syntax		Transfer Syntax		Role	Extended Neg.
Name	UID	Name	UID		
Image Storage SOP Classes listed in "Query/Retrieve AE Spec"		see: Transfer Syntaxes for Image Storage		SCU	None
Video Storage SOP Classes listed in "Query/Retrieve AE Spec"		see: Transfer Syntaxes for Video Storage		SCU	None
SR Storage SOP Classes listed in "Query/Retrieve AE Spec"		see: Transfer Syntaxes for SR Storage		SCU	None
Other Storage SOP Classes listed in "Query/Retrieve AE Spec"		see: Transfer Syntaxes for Other Storage		SCU	None

Table 11: Proposed Presentation Contexts of EnsigntQuery/Retrieve AE

Transfer Syntax Name	UID
Implicit VR Little Endian	1.2.840.10008.1.2
Explicit VR Little Endian	1.2.840.10008.1.2.1
JPEG Baseline (Process 1)	1.2.840.10008.1.2.4.50
JPEG Extended (Process 2 & 4)	1.2.840.10008.1.2.4.51
JPEG Lossless, Non-Hierarchical (Process 14)	1.2.840.10008.1.2.4.54
JPEG Lossless, Non-Hierarchical, First-Order Prediction (Process 14 [Selection Value 1])	1.2.840.10008.1.2.4.70
JPEG-LS Lossless	1.2.840.10008.1.2.4.80
JPEG-LS Lossy (Near-Lossless)	1.2.840.10008.1.2.4.81
JPEG 2000 (Lossless Only)	1.2.840.10008.1.2.4.90

Transfer Syntax Name	UID
JPEG 2000	1.2.840.10008.1.2.4.91
RLE Lossless	1.2.840.10008.1.2.5

Table 12: Transfer Syntaxes for Image Storage

Transfer Syntax Name	UID
JPEG Baseline (Process 1)	1.2.840.10008.1.2.4.50
MPEG2 Main Profile @ Main Level	1.2.840.10008.1.2.4.100
MPEG2 Main Profile @ High Level	1.2.840.10008.1.2.4.101
MPEG-4 AVC/H.264 High Profile / Level 4.1	1.2.840.10008.1.2.4.102
MPEG-4 AVC/H.264 BD-compatible High Profile / Level 4.1	1.2.840.10008.1.2.4.103
MPEG-4 AVC/H.264 High Profile / Level 4.2 For 2D Video	1.2.840.10008.1.2.4.104

Transfer Syntax Name	UID
MPEG-4 AVC/H.264 High Profile / Level 4.2 For 3D Video	1.2.840.10008.1.2.4.105
MPEG-4 AVC/H.264 Stereo High Profile / Level 4.2	1.2.840.10008.1.2.4.106

Table 13: Transfer Syntaxes for Video Storage

Transfer Syntax Name	UID
Implicit VR Little Endian	1.2.840.10008.1.2
Explicit VR Little Endian	1.2.840.10008.1.2.1
Deflated Explicit VR Little Endian	1.2.840.10008.1.2.1.99

Table 14: Transfer Syntaxes for SR Storage

Transfer Syntax Name	UID
Implicit VR Little Endian	1.2.840.10008.1.2

Transfer Syntax Name	UID
Explicit VR Little Endian	1.2.840.10008.1.2.1

Service Status	Further Meaning	Error Code	Details
Success	Success	0000	The SCP has successfully stored the exported SOP Instance. A message is sent to the QUERY-RETRIEVE-SCP AE indicating successful export. The QUERY-RETRIEVE-SCP AE will send the appropriate PENDING or SUCCESS Status in the C-MOVE Response. Success indication message is output to the Service Logs. No message is posted to the User Interface.
Refused	Out of Resources	A700 - A7FF	This is treated as a permanent Failure. A message is sent to the QUERY-RETRIEVE-SCP AE indicating an export failure and the Association is released. The QUERY-RETRIEVE-SCP AE will send an appropriate Status in the C-MOVE Response. Error indication message is output to the Service Logs. No message is posted to the User Interface.

Service Status	Further Meaning	Error Code	Details
Error	Data Set does not match SOP Class	A900 - A9FF	This is treated as a permanent Failure. A message is sent to the QUERY-RETRIEVE-SCP AE indicating an export failure and the Association is released. The QUERY-RETRIEVE-SCP AE will send an appropriate Status in the C-MOVE Response. Error indication message is output to the Service Logs. No message is posted to the User Interface.
Error	Cannot Understand	C000 - CFFF	This is treated as a permanent Failure. A message is sent to the QUERY-RETRIEVE-SCP AE indicating an export failure and the Association is released. The QUERY-RETRIEVE-SCP AE will send an appropriate Status in the C-MOVE Response. Error indication message is output to the Service Logs. No message is posted to the User Interface.
Warning	Coercion of Data Elements	B000	Image transmission is considered successful. A message is sent to the QUERY-RETRIEVE-SCP AE indicating successful export. The QUERY-RETRIEVE-SCP AE will send the appropriate PENDING or SUCCESS Status in the C-MOVE Response. Warning indication message is output to the Service Logs. No message is posted to the User Interface.

Service Status	Further Meaning	Error Code	Details
Warning	Data Set does not match SOP Class	B007	Image transmission is considered successful. A message is sent to the QUERY-RETRIEVE-SCP AE indicating successful export. The QUERY-RETRIEVE-SCP AE will send the appropriate PENDING or SUCCESS Status in the C-MOVE Response. Warning indication message is output to the Service Logs. No message is posted to the User Interface.
Warning	Elements Discarded	B006	Image transmission is considered successful. A message is sent to the QUERY-RETRIEVE-SCP AE indicating successful export. The QUERY-RETRIEVE-SCP AE will send the appropriate PENDING or SUCCESS Status in the C-MOVE Response. Warning indication message is output to the Service Logs. No message is posted to the User Interface.
Warning	Attribute List Error	0107	Image transmission is considered successful. A message is sent to the QUERY-RETRIEVE-SCP AE indicating successful export. The QUERY-RETRIEVE-SCP AE will send the appropriate PENDING or SUCCESS Status in the C-MOVE Response. Warning indication message is output to the Service Logs. No message is posted to the User Interface.

Service Status	Further Meaning	Error Code	Details
Warning	Attribute Value Out of Range	0116	Image transmission is considered successful. A message is sent to the QUERY-RETRIEVE-SCP AE indicating successful export. The QUERY-RETRIEVE-SCP AE will send the appropriate PENDING or SUCCESS Status in the C-MOVE Response. Warning indication message is output to the Service Logs. No message is posted to the User Interface.
		Any other status code.	This is treated as a permanent Failure. A message is sent to the QUERY-RETRIEVE-SCP AE indicating an export failure and the Association is released. The QUERY-RETRIEVE-SCP AE will send an appropriate Status in the C-MOVE Response. Error indication message is output to the Service Logs. No message is posted to the User Interface.

2.3 Network Interfaces

2.3.1 Physical Network Interface

Ensigntis is indifferent to the physical medium over which TCP/IP executes, which is dependent on the underlying operating system and hardware.

2.4 Configuration

2.4.1 AE Title/Presentation Address Mapping

2.4.1.1 Local AE Titles

The mapping from AE Title to TCP/IP address is configurable via a web interface or via an LDAP client.

Dedicated Local AE Titles for standardization and de-identification are configurable via a web interface or via an LDAP client.

3.0 Media Interchange

Enlight does not support Media Storage.

4.0 Support of Character Sets

Enlight supports the following extended character sets defined in DICOM 2017 standard.

Character Set Description	DICOM attribute: Specific Character Set (0008,0005)	Storage	Standardization
Latin alphabet No. 1	ISO_IR 100	Yes	Yes
Latin alphabet No. 2	ISO_IR 101	Yes	Yes
Latin alphabet No. 3	ISO_IR 109	Yes	Yes
Latin alphabet No. 4	ISO_IR 110	Yes	Yes
Cyrillic	ISO_IR 144	Yes	No
Arabic	ISO_IR 127	Yes	No
Greek	ISO_IR 126	Yes	No

Character Set Description	DICOM attribute: Specific Character Set (0008,0005)	Storage	Standardization
Hebrew	ISO_IR 138	Yes	No
Latin alphabet No. 5	ISO_IR 148	Yes	Yes
Japanese	ISO_IR 13	Yes	No
Thai	ISO_IR 166	Yes	No
Default repertoire	ISO 2022 IR 6	Yes	Yes
Latin alphabet No. 1	ISO 2022 IR 100	Yes	Yes
Latin alphabet No. 2	ISO 2022 IR 101	Yes	Yes
Latin alphabet No. 3	ISO 2022 IR 109	Yes	Yes
Latin alphabet No. 4	ISO 2022 IR 110	Yes	Yes

Character Set Description	DICOM attribute: Specific Character Set (0008,0005)	Storage	Standardization
Cyrillic	ISO 2022 IR 144	Yes	No
Arabic	ISO 2022 IR 127	Yes	No
Greek	ISO 2022 IR 126	Yes	No
Hebrew	ISO 2022 IR 138	Yes	No
Latin alphabet No. 5	ISO 2022 IR 148	Yes	Yes
Japanese	ISO 2022 IR 13	Yes	No
Thai	ISO 2022 IR 166	Yes	No
Japanese	ISO 2022 IR 87	Yes	No
Japanese	ISO 2022 IR 159	Yes	No

Character Set Description	DICOM attribute: Specific Character Set (0008,0005)	Storage	Standardization
Korean	ISO 2022 IR 149	Yes	No
Simplified Chinese	ISO 2022 IR 58	Yes	No
Unicode in UTF-8	ISO_IR 192	Yes	No
GB18030	GB18030	Yes	No
GBK	GBK	Yes	No

5.0 Security

5.1 Security Profiles

Ensight supports the following security profiles:

Security Profiles Implemented	Supported Actors/Options
Basic TLS Secure Transport Connection Profile	<i>n/a</i>
AES TLS Secure Transport Connection Profile	<i>n/a</i>
Basic Network Address Management Profile	<ul style="list-style-type: none">● DHCP Client● DNS Client
Basic Time Synchronization Profile	<ul style="list-style-type: none">● DHCP Client● DNS Client
Application Configuration Management Profile	<ul style="list-style-type: none">● LDAP Client

Security Profiles Implemented	Supported Actors/Options
Audit Trail Message Format Profile	n/a
Audit Trail Message Transmission Profile – SYSLOG–TLS	n/a
Audit Trail Message Transmission Profile – SYSLOG–UDP	n/a
Basic Application Level Confidentiality Profile	<ul style="list-style-type: none"> ● Retain Longitudinal Temporal Information Full Dates Option ● Retain Device Identity Option ● Retain UIDs Option ● Retain Institution Identity Option

5.2 Association–Level Security

Ensign can be configured to accept Association Requests from a limited list of configured AEs.

5.3 Application-Level Security

Ensignt requires user authentication for a user to access the administration console.

6.0 ANNEXES

6.1 Information Object Definitions (IODs)

This section describes all the SOP Instances natively created by Ensignt.

In the "Source" column, the following Values can be used:

- FIXED: The Value is pre-defined and cannot be modified.
- GENERATED: The Value is generated by the system.
- CONFIGURATION: The Value is copied from the system configuration.
- MWL: The Value is copied from a Modality Worklist entry.
- QUERY: The Value is determined by performing a query of any of the supported Query/Retrieve Services.
- USER: The Value is entered by the user.
- SCANNED: The Value is read from a barcode scanner or similar device.
- EMPTY: The Attribute is sent with a zero-length Value.
- SRC_INSTANCE: The Value is copied from previously created/received SOP Instances.

- The "Presence" columns reflect the usage of the Module, Functional Group Macro, Attributes, or Value in Enight Implementation and is not necessarily the same as defined in the DICOM Standard. For the "Presence" column the following Values can be used:
- ALWAYS: the module, functional group macro, Attributes or Value is always present.
- CONDITIONAL: the presence of the module, functional group macro, Attributes or Value is dependent on a condition. The condition must be listed in the "Conditions" column.
- SRC_COPY: The presence of the Attributes and Values depends on the availability of these in the source instances, which are used for copying this information.
- EMPTY: The Attribute is present but without a Value (zero length).

6.1.1 ENDEX™ Results – Comprehensive SR IOD

IE	Module Name	Presence (Module)	Reference
Patient	Patient Module	ALWAYS	Table 6-1 Patient Module
Study	General Study Module	ALWAYS	Table 6-2 General Study Module

IE	Module Name	Presence (Module)	Reference
Series	General Series	ALWAYS	Table 6-3 General Series Module
	SR Document Series Module	ALWAYS	Table 6-4 SR Document Series Module
Equipment	General Equipment Module	ALWAYS	Table 6-5 General Equipment Module
Document	SR Document General Module	ALWAYS	Table - 6-6 SR Document General Module
	SR Document Content Module	ALWAYS	Table 6-7 SR Document Content Module
	SOP Common Module	ALWAYS	Table 6-8 SOP Common Module
	General Image Module	ALWAYS	Table 6-9 General Image Module

6.1.1.1 Common Modules

All SOP Instances generated by the system use the common modules list below, as defined in the IOD specific subsections below.

Table 6-1 Patient Module

Attribute Name	Tag	Source	Presence of Attribute	Presence of Value	Value
Patient's Name	0010, 0010	SRC_INSTANCE	SRC_COPY	SRC_COPY	<i>Copied from source value</i>
Patient ID	0010, 0020	SRC_INSTANCE	SRC_COPY	SRC_COPY	Copied from source value

Table 6-2 General Study Module

Attribute Name	Tag	Source	Presence of Attribute	Presence of Value	Value
Study Instance UID	0018, 000D	SRC_INSTANCE	SRC_COPY	SRC_COPY	<i>Copied from source value</i>
Study Date	0008, 0020	SRC_INSTANCE	SRC_COPY	SRC_COPY	Copied from source value
Study Time	0008, 0030	SRC_INSTANCE	SRC_COPY	SRC_COPY	Copied from source value

Attribute Name	Tag	Source	Presence of Attribute	Presence of Value	Value
Accession Number	(0008,0050)	SRC_INSTANCE	SRC_COPY	SRC_COPY	Copied from source value
Referring Physician's Name	0008, 0090	SRC_INSTANCE	SRC_COPY	SRC_COPY	Copied from source value
Study Description	0008, 1030	GENERATED	ALWAYS	ALWAYS	Standardized study description
Study ID	0020, 0010	SRC_INSTANCE	SRC_COPY	SRC_COPY	Copied from source value

Table 6-3 General Series Module

Attribute Name	Tag	Source	Presence of Attribute	Presence of Value	Value
Series Instance UID	0020, 000E	GENERATED	ALWAYS	ALWAYS	A generated DICOM UID

Attribute Name	Tag	Source	Presence of Attribute	Presence of Value	Value
Series Description	0008, 1030	FIXED	ALWAYS	ALWAYS	ENDEXResults

Table 6-4 SR Document Series Module

Attribute Name	Tag	Source	Presence of Attribute	Presence of Value	Value
Modality	0008, 0060	FIXED	ALWAYS	ALWAYS	SR
Series Number	0020, 0010	FIXED	ALWAYS	ALWAYS	99

Table 6-5 General Equipment Module

Attribute Name	Tag	Source	Presence of Attribute	Presence of Value	Value
Manufacturer	0008,	FIXED	ALWAYS	ALWAYS	Enlitic

Attribute Name	Tag	Source	Presence of Attribute	Presence of Value	Value
	0070				
Institution Name	0008, 0080	SRC_INSTANCE	SRC_COPY	SRC_COPY	Copied from source value
Manufacturer Model Name	0008, 1090	FIXED	ALWAYS	ALWAYS	EnsigEnsigtht
Device UID	0018, 1002	FIXED	ALWAYS	ALWAYS	1.2.826.0.1.3680043.9.7296.00860002304557

Table - 6-6 SR Document General Module

Attribute Name	Tag	Source	Presence of Attribute	Presence of Value	Value
Completion Flag	0040, A491	GENERATED	ALWAYS	ALWAYS	COMPLETE
Verification Flag	0040, A493	GENERATED	ALWAYS	ALWAYS	UNVERIFIED
Content Date	0008, 0023	GENERATED	ALWAYS	ALWAYS	Current date
Content Time	0008, 0033	GENERATED	ALWAYS	ALWAYS	Current time

Table 6-7 SR Document Content Module

Attribute Name	Tag	Source	Presence of Attribute	Presence of Value	Value
Value Type	0040, A040	GENERATED	ALWAYS	ALWAYS	CONTAINER
Continuity of Content	0040, A050	GENERATED	ALWAYS	ALWAYS	SEPARATE

Attribute Name	Tag	Source	Presence of Attribute	Presence of Value	Value
Content Template Sequence	0040, A504	GENERATED	ALWAYS	ALWAYS	See ENDEX Results SR for encoding on supported TIDs

Table 6-8 SOP Common Module

Attribute Name	Tag	Source	Presence of Attribute	Presence of Value	Value
Specific Character Set	0008, 0005	CONFIGURATION	ALWAYS	ALWAYS	A DICOM Specific Character Set, as defined in the standard
Instance Creator UID	0008, 0014	FIXED	ALWAYS	ALWAYS	1.2.826.0.1.3680043.9.7296.00860002304557

Attribute Name	Tag	Source	Presence of Attribute	Presence of Value	Value
SOP Class UID	0008, 0016	FIXED	ALWAYS	ALWAYS	1.2.840.10008.5.1.4.1.1.88.33
SOP Instance UID	0008, 0018	GENERATED	ALWAYS	ALWAYS	A generated DICOM UID
Software Versions	0018, 1020	GENERATED	ALWAYS	ALWAYS	Current version of Ensignt
Original Attributes Sequence	0400, 0561	SRC_INSTANCE	SRC_COPY	SRC_COPY	Copied from source value

Table 6-9 General Image Module

Attribute Name	Tag	Source	Presence of Attribute	Presence of Value	Value
Instance Number	0020, 0013	FIXED	ALWAYS	ALWAYS	99

6.2 Structured Report Content Encoding

6.2.1 ENDEX Results SR

6.2.1.1 ENDEX Results SR Template Overview

TID	Mapping Resource	Description
ENDEXRES	99ENLITIC	Root of Standardized Results
ENDEXSTUDYRES	99ENLITIC	Study-Level Standardized Results
CDMOBJRES	99ENLITIC	Series-Level Standardized Results. Series may be broken out into constituent (sub-series) groups if it consists of disparate

TID	Mapping Resource	Description
		elements (for example, if a series contains a SCOUNT and AXIAL volume, Ensign will logically divide the series into two CDM Objects – one tracking the SCOUT the other the AXIAL volume)
ENDEXSERIESRES	99ENLITIC	<u>Summary</u> of Series-Level Standardized Results.

6.2.1.2 ENDEX Results (TID ENDEXRES)

NL	Rel with Parent	VT	Concept Name	Source	Content Item Present	Value	TID	Comment
		CONTAINER	(ENDEXRESULTS, 99ENLITIC, "ENDEX Results")				ENDEXRES	None

NL	Rel with Parent	VT	Concept Name	Source	Content Item Present	Value	TID	Comment
>	HAS CONCEPT MOD	CODE	(121049, DCM, "Language of Content Item and Descendants")	FIXED	ALWAYS	(en-US, RFC5646, "English (United States)")	1204	None
>	HAS OBS CONTEXT	CODE	(121005, DCM, "Observer Type")	FIXED	ALWAYS	(121007, DCM, "Device")	1004	None
>	HAS OBS CONTEXT	UIDREF	(121012, DCM, "Device Observer UID")	FIXED	ALWAYS	1.2.826.0.1.3680043.9.7296.00860002304557	1004	None
>	HAS OBS CONTEXT	TEXT	(121013, DCM, "Device Observer Name")	FIXED	ALWAYS	Ensign	1004	None

NL	Rel with Parent	VT	Concept Name	Source	Content Item Present	Value	TID	Comment
>	HAS OBS CONTEXT	TEXT	(121014, DCM, "Device Observer Manufacturer")	FIXED	ALWAYS	Enlitic	1004	None
>	HAS OBS CONTEXT	TEXT	(111001, DCM, "Algorithm Name")	FIXED	ALWAYS	"ENDEX	4019	None
>	HAS OBS CONTEXT	TEXT	(111003, DCM, "Algorithm Version")	GENERATED	ALWAYS	Model Version	4019	None
>	HAS CONCEPT MOD	CODE	(121058, DCM, "Procedure reported")	FIXED	ALWAYS	(363679005, SCT, "Imaging procedure")	1500	None
>	CONTAINS	CONTAINER	(ENDEXATTRIBUTES, 99ENLITIC,	GENERATED	ALWAYS			None

NL	Rel with Parent	VT	Concept Name	Source	Content Item Present	Value	TID	Comment
			"ENDEX Standardized Attributes)					
>>	CONTAINS	CONTAINER	(STUDYGROUP, 99ENLITIC, "ENDEX Study Description Group")	GENERATED	ALWAYS		ENDEXSTUDYRES	None
>>	CONTAINS	CONTAINER	(SERIESGROUP, 99ENLITIC, "ENDEX Series Description Group")	GENERATED	ALWAYS		ENDEXSERIESRES	None
>>	CONTAINS	CONTAINER	(CDMOBJGROUP, 99ENLITIC, "ENDEX CDM Object (Sub-	GENERATED	ALWAYS		CDMOBJRES	None

NL	Rel with Parent	VT	Concept Name	Source	Content Item Present	Value	TID	Comment
			Series) Group")					

6.2.1.3 Standardized Study Results (TID ENDEXSTUDYRES)

NL	Rel with Parent	VT	Concept Name	Source	Presence of Content Item	VM	Comments
	CONTAINS	CONTAINER	(STUDYGROUP, 99ENLITIC, "ENDEX Study Description Group")				None
>	HAS OBS CONTEXT	UIDREF	(110180, DCM, "Study Instance UID")	SRC_INSTANCE	ALWAYS	1	<u>None</u>
>	HAS OBS CONTEXT	TEXT	(STUDYANATOMY, 99ENLITIC, "Study	GENERATED	CONDITIONAL	1-n	Present when Study

NL	Rel with Parent	VT	Concept Name	Source	Presence of Content Item	VM	Comments
			Anatomy")				Anatomy is inferred by the model.
>	HAS OBS CONTEXT	TEXT	(STUDYVIEW, 99ENLITIC, "Study View")	GENERATED	CONDITIONAL	1-n	Present when Study View is inferred by the model.
>	HAS OBS CONTEXT	TEXT	(STUDYMODALITY, 99ENLITIC, "Study Modality")	GENERATED	CONDITIONAL	1	Present when Primary Study Modality is inferred by the model.
>	HAS OBS CONTEXT	TEXT	(STUDYMODALITY, 99ENLITIC, "Study	GENERATED	CONDITIONAL	1	Present when List of

NL	Rel with Parent	VT	Concept Name	Source	Presence of Content Item	VM	Comments
			Modalities")				modalities is inferred by the model.
>	HAS OBS CONTEXT	TEXT	(STUDYCONTRAST, 99ENLITIC, "Study Contrast")	GENERATED	CONDITIONAL	1	Present when Study contrast is inferred by the model.
>	HAS OBS CONTEXT	TEXT	(STUDYCONTRASTD, 99ENLITIC, "Study Contrast Descriptor")	GENERATED	CONDITIONAL	1	Present when Study contrast descriptor is inferred by the model.

NL	Rel with Parent	VT	Concept Name	Source	Presence of Content Item	VM	Comments
>	HAS OBS CONTEXT	TEXT	(STUDYLATERALITY, 99ENLITIC, "Study Laterality")	GENERATED	CONDITIONAL	1	Present when Study contrast descriptor is inferred by the model.
>	HAS OBS CONTEXT	TEXT	(CDMSTUDYTYPE, 99ENLITIC, "Cdm Study Type")	GENERATED	ALWAYS	1	None
>	HAS OBS CONTEXT	TEXT	(STUDYDESC, 99ENLITIC, "ENDEX Study Description")	GENERATED	ALWAYS	1	None
>	HAS OBS CONTEXT	TEXT	(ORIGSTUDYDESC, 99ENLITIC, "Original	SRC_ INSTANCE	ALWAYS	1	None

NL	Rel with Parent	VT	Concept Name	Source	Presence of Content Item	VM	Comments
			Study Description")				

6.2.1.4 Standardized Series (TID CDMOBJRES)

NL	Rel with Parent	VT	Concept Name	Source	Presence of Content Item	VM	Comments
	CONTAINS	CONTAINER	(CDMOBJRES, 99ENLITIC, "ENDEX CDM Object (Sub-Series) Group")				None
>	HAS OBS CONTEXT	TEXT	(CDMOBJID, 99ENLITIC, "Cdm Object ID")	GENERATED	ALWAYS	1	None
>	HAS OBS CONTEXT	UIDREF	(REFINSTANCEUID, 99ENLITIC, "Referenced SOP Instance UID")	SRC_INSTANCE	ALWAYS	1-n	List of SOP Instance UIDs to which this sub-series Object applies to.

NL	Rel with Parent	VT	Concept Name	Source	Presence of Content Item	VM	Comments
>	HAS OBS CONTEXT	UIDREF	(REFSERIESUID, 99ENLITIC, "Referenced Series Instance UID")	SRC_INSTANCE	ALWAYS	1	Reference to Series Instance UID of a series to which this sub-series object belongs to.
>	HAS OBS CONTEXT	TEXT	(CDMOBJTYPE, 99ENLITIC, "Cdm Object Type")	GENERATED	ALWAYS	1	None
>	HAS OBS CONTEXT	TEXT	(CDMOBJMODALITY, 99ENLITIC, "Cdm Modality")	GENERATED	CONDITIONAL	1	Present if model infers the modality for this sub-

NL	Rel with Parent	VT	Concept Name	Source	Presence of Content Item	VM	Comments
							series object.
>	HAS OBS CONTEXT	TEXT	(CDMOBJANATOMY, 99ENLITIC, "Cdm Anatomy")	GENERATED	CONDITIONAL	1	Present if model infers the anatomy for this sub-series object.
>	HAS OBS CONTEXT	TEXT	(CDMOBJLATERALITY, 99ENLITIC, "Cdm Laterality")	GENERATED	CONDITIONAL	1	Present if model infers the laterality for this sub-series object.
>	HAS OBS CONTEXT	TEXT	(CDMOBJCONTRAST, 99ENLITIC, "Cdm Contrast")	GENERATED	CONDITIONAL	1	Present if model infers contrast for

NL	Rel with Parent	VT	Concept Name	Source	Presence of Content Item	VM	Comments
							this sub-series object.
>	HAS OBS CONTEXT	TEXT	(CDMSTUDYTYPE, 99ENLITIC, "Cdm Study Type")	GENERATED	CONDITIONAL	1	Present if model infers contrast for this sub-series object.
>	HAS OBS CONTEXT	TEXT	(CDMOBJVIEW, 99ENLITIC, "Cdm View")	GENERATED	CONDITIONAL	1	Present if model infers contrast for this sub-series object.
>	HAS OBS CONTEXT	TEXT	(CDMOBJSLICETHICK, 99ENLITIC, "Cdm Slice	GENERATED	CONDITIONAL	1	Present if model infers

NL	Rel with Parent	VT	Concept Name	Source	Presence of Content Item	VM	Comments
			Thickness")				<p>slice thickness for this sub-series object.</p> <p>Applicable to CT and MR only.</p>
>	HAS OBS CONTEXT	TEXT	(CDMOBJKERNEL, 99ENLITIC, "Cdm Kernel")	GENERATED	CONDITIONAL	1	Present if model infers kernel for this sub-series object.
>	HAS OBS CONTEXT	TEXT	(CDMOBJIMGWEIGHT, 99ENLITIC, "Cdm	GENERATED	CONDITIONAL	1	Present if model infers

NL	Rel with Parent	VT	Concept Name	Source	Presence of Content Item	VM	Comments
			Image Weighting")				<p>image weighting for this sub-series object.</p> <p>Applies to MR only.</p>
>	HAS OBS CONTEXT	TEXT	(CDMOBJIMGWEIGHT Q, 99ENLITIC, "Cdm Image Weighting Qualifier")	GENERATED	CONDITIONAL	1	Present if model infers image weighting and image weighting qualifier for this sub-series object.

NL	Rel with Parent	VT	Concept Name	Source	Presence of Content Item	VM	Comments
							Applies to MR only.
>	HAS OBS CONTEXT	TEXT	(SERIESDESC, 99ENLITIC, "ENDEX Series Description")	GENERATED	ALWAYS	1	None

6.2.1.5 Summary of Standardized Series (TID ENDEXSERIESRES)



TID ENDEXSERIESRES is a summary object containing an aggregation of results from TID CDMOBSRES.

Series-level results are defined in TID CDMOBSRES.

NL	Rel with Parent	VT	Concept Name	Source	Presence of Content Item	VM	Comments
	CONTAINS	CONTAINER	(SERIESGROUP, 99ENLITIC, "ENDEX Study Description Group")			1	None
>	HAS OBS CONTEXT	UIDREF	(112002, DCM, "Series Instance UID")	SRC_INSTANCE	ALWAYS	1	None
>	HAS OBS	TEXT	(SERIESDESC,	GENERATED	ALWAYS	1	None

NL	Rel with Parent	VT	Concept Name	Source	Presence of Content Item	VM	Comments
	CONTEXT		99ENLITIC, "ENDEX Series Description")				
>	HAS OBS CONTEXT	TEXT	(ORIGSERIESDESC, 99ENLITIC, "Original Series Description")	SRC_INSTANCE	ALWAYS	1	None
>	HAS OBS CONTEXT	TEXT	(SERIESIMGWEIGHT, 99ENLITIC, "Series Image Weighting")	GENERATED	CONDITIONAL	1-n	Present when CDMOJBRES entries contain image weighting entries (MR only).
>	HAS OBS CONTEXT	TEXT	(SERIESMODALITY, 99ENLITIC, "Series	GENERATED	CONDITIONAL	1-n	Present when CDMOJBRES

NL	Rel with Parent	VT	Concept Name	Source	Presence of Content Item	VM	Comments
			Modalities")				entries contain modality entry.
>	HAS OBS CONTEXT	TEXT	(SERIESCONTRAST, 99ENLITIC, "Study Contrast")	GENERATED	CONDITIONAL	1-n	Present when CDMOJBRES entries contain contrast entries.
>	HAS OBS CONTEXT	TEXT	(SERIESIMAGEPLANE, 99ENLITIC, "Series Image Plane")	GENERATED	CONDITIONAL	1-n	Present when CDMOJBRES entries contain image plane entries

NL	Rel with Parent	VT	Concept Name	Source	Presence of Content Item	VM	Comments
							(MR, CT only).
>	HAS OBS CONTEXT	TEXT	(SERIESANATOMY, 99ENLITIC, "Series Anatomy")	GENERATED	CONDITIONAL	1-n	Present when CDMOJBRES entries contain anatomy entries.
>	HAS OBS CONTEXT	TEXT	(SERIESVIEW, 99ENLITIC, "Study View")	GENERATED	CONDITIONAL	1	Present when CDMOJBRES entries contain view entries.
>	HAS OBS CONTEXT	TEXT	(REFCDMOBJID, 99ENLITIC,	GENERATED	ALWAYS	1-n	List of underlying

NL	Rel with Parent	VT	Concept Name	Source	Presence of Content Item	VM	Comments
			"Referenced Cdm Object ID")				sub-series groups (Cdm Object Entries from CDMOBJRES).
>	HAS OBS CONTEXT	TEXT	(OTHERSERIESDESC, 99ENLITIC, "Other Standardized Series Description ")	GENERATED	ALWAYS	1-n	List of all standardized series description from the references Cdj Objects from CDMOBJRES.

6.3 Standardized Attributes

Attribute Name	Tag	VR
Attribute Name	Tag	VR
Study Description	0008, 1030	LO
Series Description	0008, 103E	LO

Standardize-supported DICOM attributes.