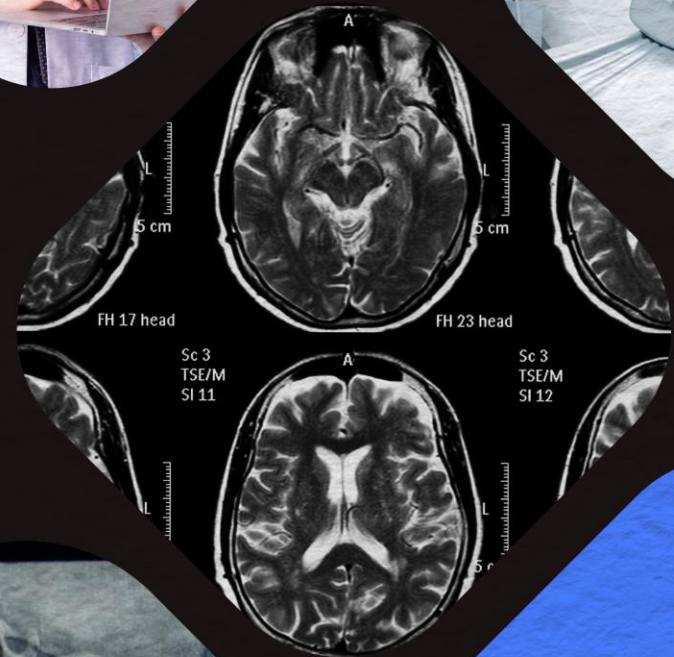
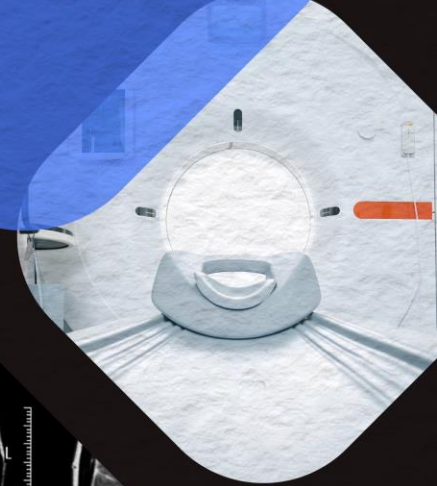


Do you spend  
too much time  
rerouting data?





# The Problem

- Patient studies are often routed based on study description
  - CT Head after hours are routed to nighthawk services
  - All MSK studies are routed to Dr. Smith
  - CT Head Axial with contrast are routed to AI algorithm
  - MR Brain are routed to 3D post-processing
- Studies don't arrive because study descriptions don't match the routing rules
- Rads waste time searching for studies, PACS Admin waste time finding studies and rerouting



# The Solution

- ENDEX data standardization using artificial intelligence normalizes study descriptions so that routing rules correctly match study descriptions consistently







# The Benefits



CAPACITY

ENDEX standardizes descriptions and facilitates sending only the series needed, reducing bandwidth demand

**~\$0.08**  
PER GB



EFFICIENCY

ENDEX correctly routes data based on study descriptions reclaiming valuable time

**36%**  
ERRORS  
POST ACQ



WORKLOAD

ENDEX adds clinically relevant labels simplifying descriptions

**94%**  
REDUCTION  
IN DESC

Enlitic impacts the clinical, operational and financial workflows and capacity of the healthcare enterprise